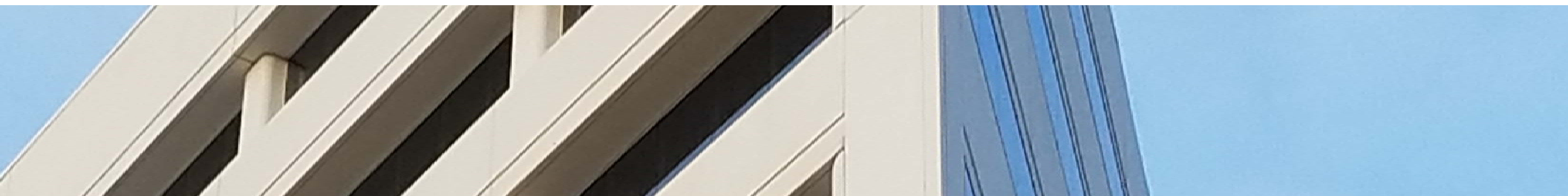




Public Employees Retirement Association of New Mexico

Wilshire Consulting



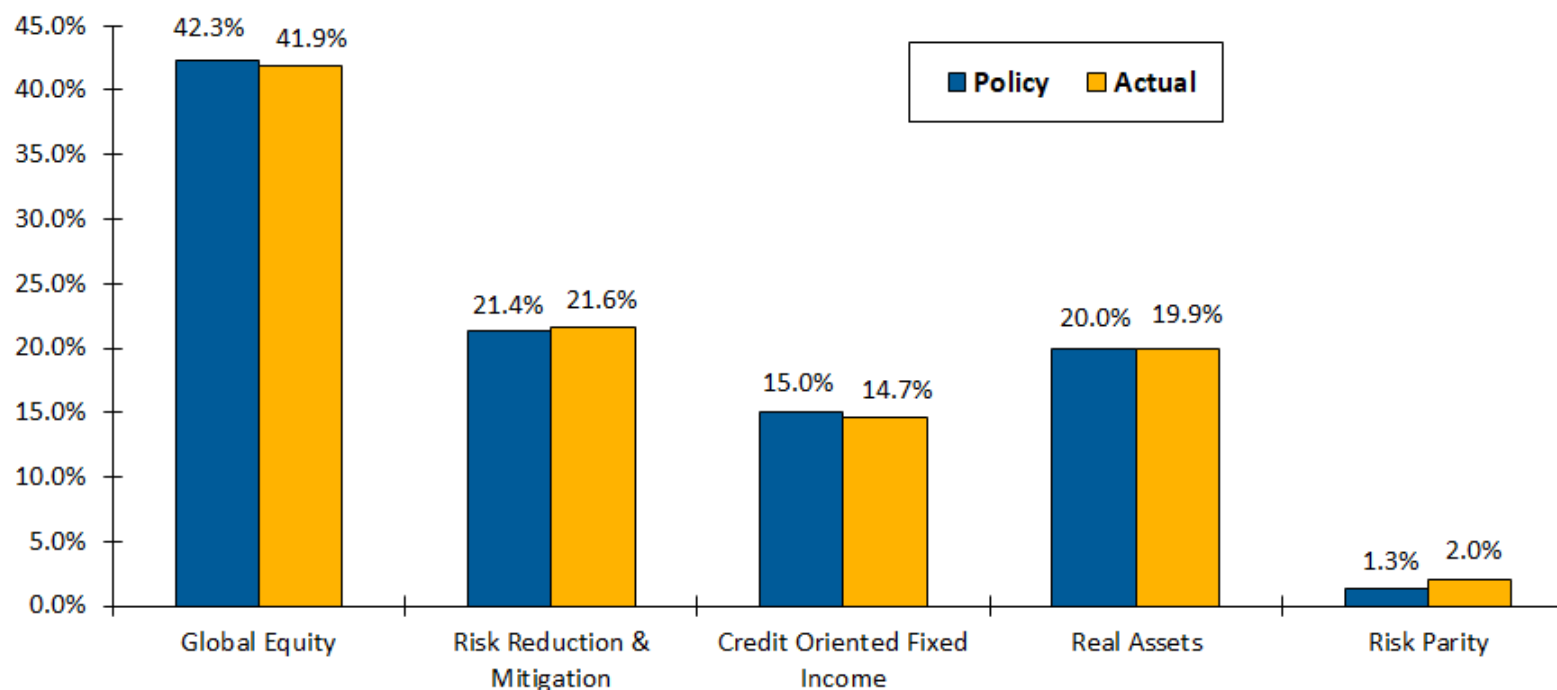
Q4 FY 19 Investment Performance Review

Thomas Toth, CFA – Managing Director

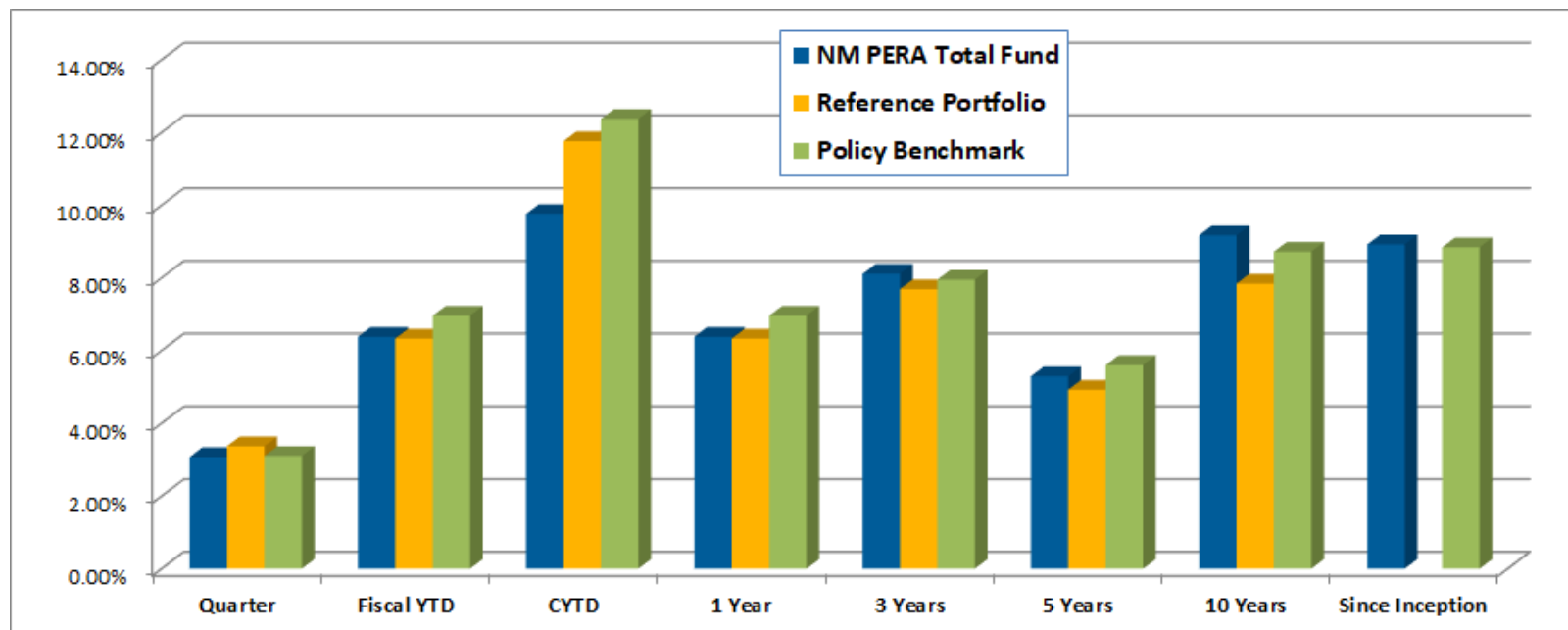
August 2019

Total Fund Asset Allocation

- Total Fund Market Value (6/30/19): \$15.6 Billion
- STO Cash Balance: \$27.7 Million
- Previous Quarter Market Value (3/31/19): \$15.3 Billion
 - Change from previous quarter: +\$310.8 Million:
 - \$179.1 Million in net distributions
 - \$489.9 Million in investment gains
- Expected Return and Risk
 - Target: 6.35%, 10.64%
 - Actual: 6.29%, 10.76%



Total Fund Performance as of 06/30/19



Composite / Manager	Quarter	Fiscal YTD	CYTD	1 Year	3 Years	5 Years	10 Years	ITD	Inception Date
TOTAL FUND	3.07	6.38	9.76	6.38	8.11	5.29	9.17	8.92	6/1/1985
TOTAL FUND REF INDEX	3.37	6.33	11.99	6.33	7.69	4.92	7.84		6/1/1985
Excess Return VS TOTAL FUND REF INDEX	-0.30	0.05	-2.23	0.05	0.42	0.37	1.33		6/1/1985
Total Policy Benchmark	3.10	6.96	12.37	6.96	7.95	5.60	8.72	8.84	6/1/1985
Excess Return VS Total Policy Benchmark	-0.03	-0.58	-2.61	-0.58	0.16	-0.31	0.45	0.08	6/1/1985
7.25 Annual (7.75 before 7/16)	1.77	7.25	3.56	7.25	7.25	7.45	7.60	7.71	6/1/1985
Excess Return VS 7.25 Annual (7.75 before 7/16)	1.30	-0.87	6.20	-0.87	0.86	-2.16	1.57	1.21	6/1/1985
Total Policy Dynamic BM	3.05	6.37	9.65	6.37	8.10	5.11			6/1/1985
Excess Return VS Total Policy Dynamic BM	0.02	0.01	0.11	0.01	0.01	0.18			6/1/1985
Beta				0.71	0.75	0.89	1.00		
Information Ratio				0.00	0.30	0.05	0.58		
Sharpe Ratio				0.67	1.45	0.83	1.07		
Index Sharpe Ratio				0.48	1.03	0.76	0.98		
Standard Deviation				6.99	4.97	5.79	7.85		
Index Standard Deviation				9.68	6.35	6.20	7.71		

Total Fund Composites

Composite / Manager	Quarter	Fiscal YTD	CYTD	1 Year	3 Years	5 Years	10 Years	ITD	Inception Date	Market Value	% of Total
TOTAL FUND	3.07	6.38	9.76	6.38	8.11	5.29	9.17	8.92	6/1/1985	\$ 15,648,407,954	100.00
TOTAL FUND REF INDEX	3.37	6.33	11.99	6.33	7.69	4.92	7.84		6/1/1985		
Excess Return VS TOTAL FUND REF INDEX	-0.30	0.05	-2.23	0.05	0.42	0.37	1.33		6/1/1985		
Total Policy Benchmark	3.10	6.96	12.37	6.96	7.95	5.60	8.72	8.84	6/1/1985		
Excess Return VS Total Policy Benchmark	-0.03	-0.58	-2.61	-0.58	0.16	-0.31	0.45	0.08	6/1/1985		
7.25 Annual (7.75 before 7/16)	1.77	7.25	3.56	7.25	7.25	7.45	7.60	7.71	6/1/1985		
Excess Return VS 7.25 Annual (7.75 before 7/16)	1.30	-0.87	6.20	-0.87	0.86	-2.16	1.57	1.21	6/1/1985		
Total Policy Dynamic BM	3.05	6.37	9.65	6.37	8.10	5.11			6/1/1985		
Excess Return VS Total Policy Dynamic BM	0.02	0.01	0.11	0.01	0.01	0.18			6/1/1985		
GLOBAL EQUITY	3.94	6.77	14.73	6.77	12.36	6.97		9.17	4/1/2013	\$ 6,548,165,486	41.85
Global Equity BM	3.51	6.23	15.84	6.23	11.46	7.36		9.82	4/1/2013		
Excess Return VS Global Equity BM	0.43	0.54	-1.12	0.54	0.90	-0.39		-0.65	4/1/2013		
Global Equity Dynamic BM	3.69	6.34	13.84	6.34	12.33	6.92		9.07	4/1/2013		
Excess Return VS Global Equity Dynamic BM	0.25	0.42	0.89	0.42	0.03	0.06		0.10	4/1/2013		
RISK REDUCTION & MITIGATION	3.10	7.93	6.28	7.93	2.61	3.10		2.92	4/1/2013	\$ 3,378,218,731	21.59
Risk Reduction & Mitigation BM	3.06	7.85	6.10	7.85	2.41	3.03		2.76	4/1/2013		
Excess Return VS Risk Reduct & Mitig BM	0.04	0.08	0.18	0.08	0.21	0.07		0.16	4/1/2013		
Risk Red & Mitigation Dyn BM	3.05	7.82	6.04	7.82	2.46	3.09		2.82	4/1/2013		
Excess Return VS Risk Red & Mitigation Dyn BM	0.05	0.11	0.24	0.11	0.15	0.02		0.10	4/1/2013		
CREDIT ORIENTED FIXED INCOME	2.02	4.78	3.82	4.78	5.82	3.32		4.74	4/1/2013	\$ 2,294,885,208	14.67
Credit Oriented FI BM	3.35	8.38	9.60	8.38	6.87	4.19		5.21	4/1/2013		
Excess Return VS Credit Oriented FI BM	-1.33	-3.60	-5.78	-3.60	-1.04	-0.88		-0.48	4/1/2013		
Credit Oriented FI Dynamic BM	2.14	4.75	3.94	4.75	6.39	4.04		5.86	4/1/2013		
Excess Return VS Credit Oriented FI Dynamic BM	-0.13	0.03	-0.12	0.03	-0.57	-0.72		-1.13	4/1/2013		
REAL ASSETS	1.63	4.61	7.44	4.61	5.86	3.87		4.99	4/1/2013	\$ 3,111,830,837	19.89
Real Assets BM	1.39	4.89	12.97	4.89	6.57	3.44		4.93	4/1/2013		
Excess Return VS Real Assets BM	0.24	-0.28	-5.53	-0.28	-0.71	0.43		0.06	4/1/2013		
Real Assets Dynamic BM	1.95	5.59	8.84	5.59	5.59	3.50		4.25	4/1/2013		
Excess Return VS Real Assets Dynamic BM	-0.32	-0.98	-1.40	-0.98	0.27	0.37		0.74	4/1/2013		
MULTI-RISK ALLOCATION								7.64	5/1/2019	\$ 315,307,691	2.01
Wilshire Risk Parity 15% Vol Index								7.97	5/1/2019		
Excess Return VS Wilshire Risk Parity 15% Vol Idx								-0.33	5/1/2019		

Total Fund Attribution – Quarter

Quarter - 6/30/19							Net Management Effects		
	NM PERA		Policy		Difference		Allocation	Selection	Total
	Weight	Return	Weight	Return	Weight	Return			
GLOBAL EQUITY	42.52	3.94	42.85	3.51	-0.33	0.43	-0.03	0.17	0.14
Global Public Stock	29.01	3.48	26.85	3.37	2.16	0.11	-0.03	0.04	0.01
Global Low Volatility	6.62	4.21	5.00	4.07	1.62	0.14	0.02	0.01	0.03
Hedged Equity	0.28	1.55	2.00	4.07	-1.72	-2.52	-0.02	-0.01	-0.02
Private Equity	6.61	5.67	9.00	3.37	-2.39	2.30	0.00	0.14	0.13
RISK REDUCTION & MITIGATION	21.75	3.09	21.50	3.06	0.25	0.03	-0.01	-0.01	-0.01
Domestic Core Fixed Income	18.32	3.10	19.00	3.08	-0.68	0.02	-0.01	0.00	-0.01
Global Core Fixed Income	2.52	2.59	2.50	2.92	0.02	-0.33	0.00	-0.01	-0.01
Cash	0.92	4.33	0.00	0.00	0.92	4.33	0.01	0.00	0.01
CREDIT ORIENTED FIXED INCOME	14.94	2.02	15.00	3.35	-0.06	-1.33	-0.02	-0.18	-0.20
Liquid Credit	5.07	1.77	3.00	2.97	2.07	-1.20	0.00	-0.06	-0.06
Emerging Market Debt	2.31	2.05	3.00	4.86	-0.69	-2.81	-0.02	-0.06	-0.08
Illiquid Credit - PE/RE Debt	4.57	2.59	6.00	2.97	-1.43	-0.38	0.00	-0.01	-0.01
Illiquid Credit - CO HF	2.99	1.58	3.00	2.97	-0.01	-1.39	0.00	-0.04	-0.04
REAL ASSETS	20.05	1.63	20.00	1.39	0.05	0.24	0.00	0.04	0.05
Liquid Real Estate	2.47	2.23	2.00	1.57	0.47	0.66	-0.01	0.02	0.00
Illiquid Real Estate	4.24	2.05	5.00	1.57	-0.76	0.48	0.01	0.02	0.03
Liquid Real Assets	8.61	1.11	8.00	1.76	0.61	-0.65	0.00	-0.06	-0.06
Illiquid Real Assets	4.71	2.00	5.00	0.54	-0.29	1.46	0.01	0.07	0.08
Market Neutral HF	0.02	3.98	0.00	0.00	0.02	3.98	0.00	0.00	0.00
MULTI-RISK ALLOCATION	0.74	6.10	0.65	8.18	0.09	-2.08	0.00	-0.01	-0.01
TOTAL	100.00	3.06	100.00	3.09			-0.05	0.02	-0.03

Total Fund Attribution – 1 year

1 year - 6/30/19	Net Management Effects								
	NM PERA		Policy		Difference		Allocation	Selection	Total
	Weight	Return	Weight	Return	Weight	Return			
GLOBAL EQUITY	43.19	6.74	43.34	6.23	-0.15	0.51	-0.21	0.31	0.10
Global Public Stock	30.51	4.01	27.73	4.56	2.78	-0.55	-0.13	-0.18	-0.30
Global Low Volatility	6.02	13.49	4.68	13.00	1.34	0.49	0.06	0.03	0.09
Hedged Equity	0.29	2.94	2.09	13.00	-1.80	-10.06	-0.11	-0.03	-0.14
Private Equity	6.37	15.17	8.85	6.56	-2.48	8.61	-0.03	0.49	0.45
RISK REDUCTION & MITIGATION	21.27	7.92	21.50	7.85	-0.23	0.07	-0.07	0.02	-0.05
Domestic Core Fixed Income	17.46	8.05	18.75	7.87	-1.29	0.18	-0.06	0.03	-0.03
Global Core Fixed Income	2.78	6.51	2.54	7.80	0.24	-1.29	0.02	-0.04	-0.02
Cash	1.03	9.89	0.21	0.00	0.82	9.89	-0.03	0.02	-0.01
CREDIT ORIENTED FIXED INCOME	15.23	4.78	15.00	8.38	0.23	-3.60	-0.06	-0.51	-0.57
Liquid Credit	5.15	3.26	3.00	7.76	2.15	-4.50	0.02	-0.21	-0.19
Emerging Market Debt	2.83	7.08	3.00	10.77	-0.17	-3.69	-0.05	-0.08	-0.13
Illiquid Credit - PE/RE Debt	4.27	5.66	6.00	7.76	-1.73	-2.10	-0.03	-0.13	-0.16
Illiquid Credit - CO HF	2.98	4.62	3.00	7.76	-0.02	-3.14	0.00	-0.09	-0.10
REAL ASSETS	20.13	4.61	20.00	4.89	0.13	-0.28	0.03	-0.09	-0.06
Liquid Real Estate	3.34	11.24	2.00	10.05	1.34	1.19	0.04	0.03	0.08
Illiquid Real Estate	3.58	8.64	5.00	10.05	-1.42	-1.41	-0.03	-0.10	-0.14
Liquid Real Assets	8.51	1.58	8.00	4.04	0.51	-2.46	-0.02	-0.22	-0.23
Illiquid Real Assets	4.68	3.77	5.00	-0.96	-0.32	4.73	0.04	0.20	0.23
Market Neutral HF	0.03	6.92	0.00	0.00	0.03	6.92	0.00	0.00	0.00
MULTI-RISK ALLOCATION	0.19		0.16		0.03	0.00	0.00	-0.01	-0.01
TOTAL	100.01	6.37	100.00	6.96			-0.30	-0.29	-0.59

Total Fund Attribution – 2 year

2 year - 6/30/19	Net Management Effects								
	NM PERA		Policy		Difference				
	Weight	Return	Weight	Return	Weight	Return	Allocation	Selection	Total
GLOBAL EQUITY	44.39	8.93	43.42	8.45	0.97	0.48	0.02	0.22	0.23
Global Public Stock	32.68	7.55	28.00	7.80	4.68	-0.25	0.18	-0.07	0.11
Global Low Volatility	5.57	10.64	4.51	10.13	1.06	0.51	0.04	0.03	0.06
Hedged Equity	0.36	7.95	2.13	9.53	-1.77	-1.58	-0.06	-0.02	-0.08
Private Equity	5.79	14.33	8.78	9.30	-2.99	5.03	-0.13	0.28	0.14
RISK REDUCTION & MITIGATION	21.86	3.84	21.50	3.79	0.36	0.05	-0.09	0.01	-0.08
Domestic Core Fixed Income	17.52	3.86	18.62	3.65	-1.10	0.21	-0.02	0.04	0.01
Global Core Fixed Income	2.92	3.57	2.56	4.68	0.36	-1.11	0.00	-0.03	-0.03
Cash	1.43	5.18	0.32	0.00	1.11	5.18	-0.07	0.01	-0.06
CREDIT ORIENTED FIXED INCOME	14.92	4.70	15.00	4.72	-0.08	-0.02	-0.08	0.06	-0.02
Liquid Credit	5.33	4.54	3.00	4.38	2.33	0.16	-0.05	0.03	-0.01
Emerging Market Debt	3.16	1.65	3.00	4.10	0.16	-2.45	-0.04	-0.07	-0.11
Illiquid Credit - PE/RE Debt	3.53	8.00	6.00	5.76	-2.47	2.24	0.00	0.04	0.04
Illiquid Credit - CO HF	2.90	5.61	3.00	3.54	-0.10	2.07	0.00	0.06	0.06
REAL ASSETS	18.73	5.17	20.00	3.65	-1.27	1.52	0.15	0.24	0.39
Liquid Real Estate	3.07	8.38	1.75	7.77	1.32	0.61	0.03	0.01	0.04
Illiquid Real Estate	3.50	11.79	5.65	7.60	-2.15	4.19	0.00	0.07	0.07
Liquid Real Assets	7.33	-1.08	6.50	-0.08	0.83	-1.00	0.02	-0.09	-0.07
Illiquid Real Assets	4.72	6.12	5.85	0.12	-1.13	6.00	0.09	0.26	0.35
Market Neutral HF	0.11	2.29	0.25		-0.14	2.29	0.01	0.00	0.01
MULTI-RISK ALLOCATION	0.09		0.08		0.01	0.00	0.00	-0.01	-0.01
TOTAL	99.99	6.63	100.00	6.11			-0.01	0.53	0.52

Total Fund Attribution – 3 year

3 Year - 6/30/19	NM PERA		Policy		Difference		Net Management Effects		
	Weight	Return	Weight	Return	Weight	Return	Allocation	Selection	Total
GLOBAL EQUITY	46.50	12.36	43.45	11.46	3.05	0.90	0.29	0.29	0.57
Global Public Stock	35.79	11.76	28.09	11.42	7.70	0.34	0.43	0.15	0.59
Global Low Volatility	4.59		4.46	8.75	0.13	-8.75	0.11	0.03	0.15
Hedged Equity	0.78	8.25	2.15	9.94	-1.37	-1.69	-0.04	-0.02	-0.06
Private Equity	5.34	15.07	8.75	13.09	-3.41	1.98	-0.22	0.13	-0.10
RISK REDUCTION & MITIGATION	23.73	2.61	21.50	2.41	2.23	0.20	-0.32	0.05	-0.27
Domestic Core Fixed Income	19.10	2.50	18.58	2.31	0.52	0.19	-0.19	0.04	-0.15
Global Core Fixed Income	3.01	2.61	2.57	2.95	0.44	-0.34	-0.03	-0.01	-0.04
Cash	1.62	4.65	0.36		1.26	4.65	-0.11	0.02	-0.08
CREDIT ORIENTED FIXED INCOME	13.34	5.83	15.00	6.87	-1.66	-1.04	-0.08	-0.05	-0.13
Liquid Credit	4.87	5.85	3.00	6.83	1.87	-0.98	-0.03	-0.03	-0.05
Emerging Market Debt	2.93	2.92	3.00	4.74	-0.07	-1.82	-0.02	-0.06	-0.08
Illiquid Credit - PE/RE Debt	3.02	8.86	6.00	8.52	-2.98	0.34	-0.04	0.01	-0.03
Illiquid Credit - CO HF	2.53	6.30	3.00	5.60	-0.47	0.70	-0.01	0.03	0.03
REAL ASSETS	16.37	5.86	20.00	6.57	-3.63	-0.71	-0.01	0.00	-0.01
Liquid Real Estate	2.65	5.93	1.50	4.79	1.15	1.14	-0.02	0.02	0.00
Illiquid Real Estate	3.11	9.35	6.30	8.18	-3.19	1.17	0.04	0.00	0.05
Liquid Real Assets	5.48	0.23	5.00	0.08	0.48	0.15	0.02	-0.05	-0.03
Illiquid Real Assets	4.61	8.93	6.70	6.83	-2.09	2.10	-0.06	0.04	-0.02
Market Neutral HF	0.51	1.83	0.50		0.01	1.83	0.00	-0.01	-0.01
MULTI-RISK ALLOCATION	0.06		0.05		0.01	0.00	0.00	0.00	0.00
TOTAL	100.00	8.11	100.00	7.95			-0.13	0.29	0.16

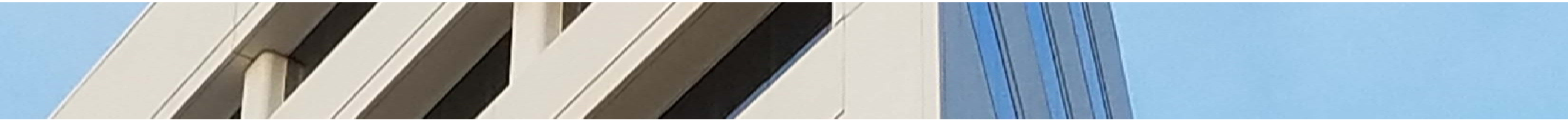
Financial Reconciliation and Schedule of Investable Assets

Financial Reconciliation - Quarter to Date

	Beg. Market Value \$(000)	Contributions \$(000)	Distributions \$(000)	Fees \$(000)	Return on Investment \$(000)	End Market Value \$(000)
NM PERA Total Fund	\$ 15,337,656	\$ 3,136	\$ (160,019)	\$ (22,263)	\$ 489,898	\$ 15,648,408

NM PERA Total Fund - Schedule of Investable Assets - Quarter to Date

Periods	Beg. Market Value \$(000)	Net Cash Flow \$(000)	Gain/Loss \$(000)	End Market Value \$(000)	Time Wtd Return (%)	Unit Value
QTD	\$ 15,337,656	\$ (179,146)	\$ 489,898	\$ 15,648,408	3.07	103.07



Global Equity

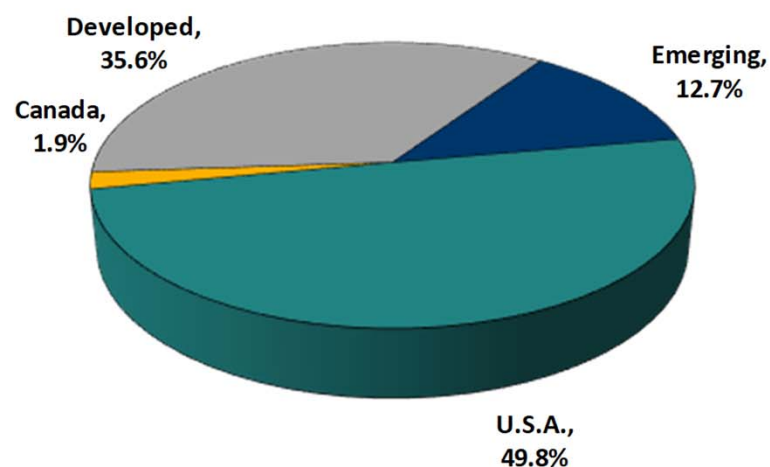
Global Equity Structure

GLOBAL EQUITY			
Manager	Benchmark	Market Value	Actual %
SSgA ACWI IMI Index	MSCI ACWI IMI Index	\$ 2,491,058,403	56.4%
Global Equity Overlay	Global Equity Blend	\$ 108,140,363	2.4%
AQR Alphaport	MSCI ACWI IMI Index	\$ 443,471,643	10.0%
Portable Alpha	S&P 500	\$ 7,760,690	0.2%
TimesSquare SMID Growth	Russell 2500 Growth	\$ 160,855,791	3.6%
Kayne Anderson Small Core	Russell 2000	\$ 224,291,142	5.1%
NT MSCI ACWI x-US Index	MSCI ACWI ex-US	\$ 3,206,004	0.1%
Acadian International Equity	MSCI EAFE Index	\$ 273,912,331	6.2%
KBI Global Investors EAFE Dev	MSCI EAFE Value	\$ 1,450,039	0.0%
MFS International Value	MSCI EAFE Index	\$ 188,308,849	4.3%
Principal International Small Cap	MSCI World ex-US Small	\$ 139,760,000	3.2%
Schroder International Small	MSCI EAFE Small	\$ 130,911,170	3.0%
Axiom Emerging Markets	MSCI Emerging Markets	\$ 245,819,055	5.6%
Russell Transition	MSCI Emerging Markets	\$ 334,638	0.0%
BlackRock Equity Transition	n/a	\$ 110,434	0.0%
Global Public Equity Composite	MSCI ACWI IMI (\$n)	\$ 4,419,390,550	67.5%
BlackRock MSCI ACWI Minimum Volatility	MSCI ACWI Min Vol (\$n)	\$ 1,055,827,778	
Global Low Volatility Equity Comp	MSCI ACWI Min Vol (\$n)	\$ 1,055,827,778	16.1%
Hedged Equity Composite	MSCI ACWI Min Vol (\$n)	\$ 43,966,458	0.7%
Private Equity Composite	Russell 3000	\$ 1,028,980,700	15.7%
TOTAL GLOBAL EQUITY COMPOSITE	83.46% MSCI ACWI IMI (\$n) / 16.64% MSCI ACWI Min Vol (\$n)	\$ 6,548,165,486	

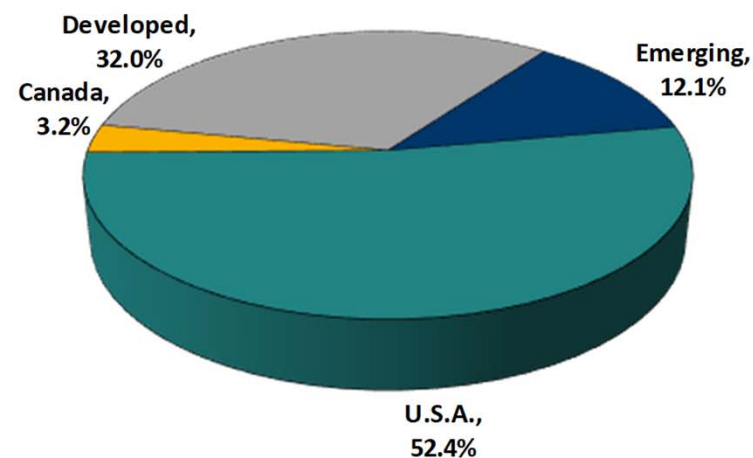
Global Public Equity Region Allocation

Region	NM PERA	MSCI ACWI IMI	Over / Under weight
U.S.A.	49.8%	52.4%	-2.6%
Canada	1.9%	3.2%	-1.3%
Developed	35.6%	32.0%	3.6%
Emerging	12.7%	12.1%	0.6%
Total	100%	100%	

NM PERA Global Public Equity



MSCI ACWI IMI Index



Global Equity Composite Performance

Composite / Manager	Quarter	Fiscal YTD	CYTD	1 Year	3 Years	5 Years	10 Years	ITD	Inception Date	Market Value	% of Total
GLOBAL EQUITY	3.94	6.77	14.73	6.77	12.36	6.97		9.17	4/1/2013	\$ 6,548,165,486	41.85
Global Equity BM	3.51	6.23	15.84	6.23	11.46	7.36		9.82	4/1/2013		
Excess Return VS Global Equity BM	0.43	0.54	-1.12	0.54	0.90	-0.39		-0.65	4/1/2013		
Global Equity Dynamic BM	3.69	6.34	13.84	6.34	12.33	6.92		9.07	4/1/2013		
Excess Return VS Global Equity Dynamic BM	0.25	0.42	0.89	0.42	0.03	0.06		0.10	4/1/2013		
Beta				0.82	0.85	0.96					
Information Ratio				0.29	0.55	-0.03					
Sharpe Ratio				0.37	1.24	0.64					
Index Sharpe Ratio				0.24	0.96	0.65					
Standard Deviation				13.23	9.09	9.93					
Index Standard Deviation				15.99	10.48	9.92					
Global Public Stock	3.48	4.01	16.77	4.01	11.76	6.06	10.82	7.63	10/1/2004	\$ 4,419,390,550	28.24
Public Equity Benchmark	3.37	4.56	16.07	4.56	11.42	6.84	11.56		10/1/2004		
Excess Return VS Public Equity Benchmark	0.12	-0.55	0.69	-0.55	0.34	-0.77	-0.74		10/1/2004		
MSCI ACWI IMI (\$N)	3.37	4.56	16.07	4.56	11.42	6.03	10.32	7.39	10/1/2004		
Excess Return VS MSCI ACWI IMI (\$N)	0.12	-0.55	0.69	-0.55	0.34	0.03	0.50	0.25	10/1/2004		
Global Public Stock Dynamic BM	3.21	3.45	15.96	3.45	11.40	6.00			10/1/2004		
Excess Return VS Global Public Stock Dynamic BM	0.28	0.56	0.80	0.56	0.36	0.07			10/1/2004		
Beta				1.02	1.02	1.01	0.95				
Information Ratio				-0.54	0.70	-0.17	-0.19				
Sharpe Ratio				0.11	0.91	0.45	0.78				
Index Sharpe Ratio				0.13	0.89	0.47	0.77				
Standard Deviation				17.21	11.55	11.88	12.73				
Index Standard Deviation				16.86	11.31	11.75	13.31				
Global Low Volatility Equity	4.21	13.62	14.77	13.62				11.91	11/1/2016	\$ 1,055,827,778	6.75
MSCI ACWI Min Vol (\$N)	4.07	13.00	14.43	13.00				11.28	11/1/2016		
Excess Return VS MSCI ACWI Min Vol (\$N)	0.14	0.62	0.34	0.62				0.63	11/1/2016		
Blackrock Low Vol Intl Equity	4.21	13.62	14.77	13.62				11.91	11/1/2016	\$ 1,055,827,778	6.75
MSCI ACWI Min Vol (\$N)	4.07	13.00	14.43	13.00				11.28	11/1/2016		
Excess Return VS MSCI ACWI Min Vol (\$N)	0.14	0.62	0.34	0.62				0.63	11/1/2016		
Beta				1.00							
Information Ratio				3.65							
Sharpe Ratio				1.06							
Index Sharpe Ratio				1.01							
Standard Deviation				10.62							
Index Standard Deviation				10.58							

Global Equity Composite Performance

Composite / Manager	Quarter	Fiscal YTD	CYTD	1 Year	3 Years	5 Years	10 Years	ITD	Inception Date	Market Value	% of Total
Hedged Equity	1.55	2.94	1.48	2.94	8.25	3.65		5.51	4/1/2013	\$ 43,966,458	0.28
Hedged Equity BM	4.07	13.00	14.43	13.00	9.94	5.34		6.23	4/1/2013		
Excess Return VS Hedged Equity BM	-2.53	-10.06	-12.96	-10.06	-1.69	-1.69		-0.72	4/1/2013		
MSCI ACWI Min Vol (\$N)	4.07	13.00	14.43	13.00	8.75	8.87		8.89	4/1/2013		
Excess Return VS MSCI ACWI Min Vol (\$N)	-2.53	-10.06	-12.96	-10.06	-0.50	-5.22		-3.38	4/1/2013		
Hedged Equity Dynamic BM	-0.17	0.33	1.67	0.33	5.89	2.73		4.18	4/1/2013		
Excess Return VS Hedged Equity Dynamic BM	1.72	2.61	-0.19	2.61	2.37	0.92		1.33	4/1/2013		
<i>Beta</i>				-0.04	-0.08	0.10					
<i>Information Ratio</i>				-0.85	-0.16	-0.23					
<i>Sharpe Ratio</i>				0.22	1.01	0.44					
<i>Index Sharpe Ratio</i>				1.01	1.20	0.69					
<i>Standard Deviation</i>				2.81	6.80	6.33					
<i>Index Standard Deviation</i>				10.58	7.14	7.01					
Private Equity	5.67	15.35	6.45	15.35	15.13	15.17	14.03	5.75	12/1/2006	\$ 1,028,980,700	6.58
Private Equity BM	3.37	6.56	16.07	6.56	13.09	11.37			12/1/2006		
Excess Return VS Private Equity BM	2.30	8.79	-9.63	8.79	2.04	3.80			12/1/2006		
MSCI ACWI IMI (\$N)	3.37	4.56	16.07	4.56	11.42	6.03	10.32	5.35	12/1/2006		
Excess Return VS MSCI ACWI IMI (\$N)	2.30	10.79	-9.63	10.79	3.71	9.13	3.72	0.40	12/1/2006		
Private Equity Dynamic BM	5.76	16.53	5.49	16.53	15.75	13.90			12/1/2006		
Excess Return VS Private Equity Dynamic BM	-0.09	-1.18	0.95	-1.18	-0.62	1.27			12/1/2006		
<i>Beta</i>				-0.07	-0.04	0.01	0.03				
<i>Information Ratio</i>				0.53	0.29	0.56	0.06				
<i>Sharpe Ratio</i>				2.45	3.29	3.35	2.89				
<i>Index Sharpe Ratio</i>				0.24	0.98	0.75	1.04				
<i>Standard Deviation</i>				6.32	4.76	4.78	4.92				
<i>Index Standard Deviation</i>				18.05	12.02	11.90	12.97				

Global Public Stock Performance

Composite / Manager	Quarter	Fiscal YTD	CYTD	1 Year	3 Years	5 Years	10 Years	ITD	Inception Date	Market Value	% of Total
Global Public Stock	3.48	4.01	16.77	4.01	11.76	6.06	10.82	7.63	10/1/2004	\$ 4,419,390,550	28.24
Public Equity Benchmark	3.37	4.56	16.07	4.56	11.42	6.84	11.56		10/1/2004		
Excess Return VS Public Equity Benchmark	0.12	-0.55	0.69	-0.55	0.34	-0.77	-0.74		10/1/2004		
MSCI ACWI IMI (\$N)	3.37	4.56	16.07	4.56	11.42	6.03	10.32	7.39	10/1/2004		
Excess Return VS MSCI ACWI IMI (\$N)	0.12	-0.55	0.69	-0.55	0.34	0.03	0.50	0.25	10/1/2004		
Global Public Stock Dynamic BM	3.21	3.45	15.96	3.45	11.40	6.00			10/1/2004		
Excess Return VS GPS Dynamic BM	0.28	0.56	0.80	0.56	0.36	0.07			10/1/2004		
Beta				1.02	1.02	1.01	0.95				
Information Ratio				-0.54	0.70	-0.17	-0.19				
Sharpe Ratio				0.11	0.91	0.45	0.78				
Index Sharpe Ratio				0.13	0.89	0.47	0.77				
Standard Deviation				17.21	11.55	11.88	12.73				
Index Standard Deviation				16.86	11.31	11.75	13.31				
Global Public Stock - Active	3.37	2.25	16.92	2.25	10.39	5.12		7.87	4/1/2013	\$ 1,816,875,347	11.61
MSCI ACWI IMI (\$N)	3.37	4.56	16.07	4.56	11.42	6.03		8.30	4/1/2013		
Excess Return VS MSCI ACWI IMI (\$N)	0.01	-2.31	0.85	-2.31	-1.03	-0.91		-0.42	4/1/2013		
Glb Public Stock Active Dyn BM	2.77	0.76	15.03	0.76	10.83	5.24		7.80	4/1/2013		
Excess Return VS GPS Active Dyn BM	0.61	1.49	1.89	1.49	-0.44	-0.11		0.07	4/1/2013		
Beta				1.03	1.02	1.01					
Information Ratio				-1.22	-0.50	-0.25					
Sharpe Ratio				0.01	0.80	0.38					
Index Sharpe Ratio				0.13	0.89	0.44					
Standard Deviation				17.50	11.63	12.09					
Index Standard Deviation				16.86	11.31	11.74					
Global Public Stock - Passive	3.55	5.03	16.23	5.03	11.72	6.27		8.49	4/1/2013	\$ 2,494,374,841	15.94
MSCI ACWI IMI (\$N)	3.37	4.56	16.07	4.56	11.42	6.03		8.30	4/1/2013		
Excess Return VS MSCI ACWI IMI (\$N)	0.18	0.47	0.16	0.47	0.30	0.24		0.20	4/1/2013		
Glb Public Stock - Pass Dyn BM	3.37	4.55	16.07	4.55	11.44	6.14		8.36	4/1/2013		
Excess Return VS GPS - Pass Dyn BM	0.18	0.47	0.16	0.47	0.28	0.14		0.13	4/1/2013		
Blackrock Equity Transition	1.34	0.76	0.44	0.76				-2.92	8/1/2016	\$ 110,434	0.00
NTGI ACWI X US	1.63	-1.13	-0.63	-1.13	3.85	-0.87		2.07	1/1/2011	\$ 3,206,004	0.02
SSGA ACWI IMI	3.43	4.92	16.13	4.92				10.71	10/1/2016	\$ 2,491,058,403	15.92
MSCI ACWI IMI (\$N)	3.37	4.56	16.07	4.56				10.32	10/1/2016		
Excess Return VS MSCI ACWI IMI (\$N)	0.07	0.36	0.06	0.36				0.39	10/1/2016		
Equity Cash Overlay	3.39	18.08	36.27	18.08	47.80			47.80	7/1/2016	\$ 108,140,363	0.69
Parametric Gbl Equity Overlay	3.47	8.14	16.01	8.14	12.33			12.33	7/1/2016	\$ 108,140,363	0.69
MSCI ACWI IMI (\$N)	3.37	4.56	16.07	4.56	11.42			11.42	7/1/2016		
Excess Return VS MSCI ACWI IMI (\$N)	0.10	3.58	-0.06	3.58	0.91			0.91	7/1/2016		

Global Public Stock Performance

Composite / Manager	Quarter	Fiscal YTD	CYTD	1 Year	3 Years	5 Years	10 Years	ITD	Inception Date	Market Value	% of Total
Active U.S. Equity	4.13	5.34	20.85	5.34	12.98	8.30	12.90	9.44	10/1/2004	\$ 836,379,266	5.34
MSCI ACWI IMI (\$N)	3.37	4.56	16.07	4.56	11.42	6.03	10.32	7.39	10/1/2004		
Excess Return VS MSCI ACWI IMI (\$N)	0.76	0.78	4.78	0.78	1.57	2.27	2.59	2.05	10/1/2004		
Active U.S. Equity Dynamic BM	3.62	5.39	19.03	5.39	13.90	9.21			10/1/2004		
Excess Return VS Active U.S. Eq Dynamic BM	0.51	-0.06	1.82	-0.06	-0.91	-0.91			10/1/2004		
<i>Beta</i>				1.22	1.14	1.04	0.88				
<i>Information Ratio</i>				0.16	0.32	0.47	0.30				
<i>Sharpe Ratio</i>				0.15	0.85	0.58	0.97				
<i>Index Sharpe Ratio</i>				0.13	0.89	0.44	0.82				
<i>Standard Deviation</i>				20.99	13.88	13.25	12.44				
<i>Index Standard Deviation</i>				16.86	11.31	11.74	12.95				
AQR ALPHAPORT	1.79	2.52	15.58	2.52	11.63			9.16	8/1/2015	\$ 443,471,643	2.83
Russell 3000 Index	4.10	8.98	18.71	8.98	14.02			10.70	8/1/2015		
Excess Return VS Russell 3000 Index	-2.31	-6.46	-3.13	-6.46	-2.39			-1.54	8/1/2015		
MSCI ACWI IMI (\$N)	3.37	4.56	16.07	4.56	11.42			7.39	8/1/2015		
Excess Return VS MSCI ACWI IMI (\$N)	-1.58	-2.04	-0.49	-2.04	0.21			1.77	8/1/2015		
<i>Beta</i>				1.07	1.08						
<i>Information Ratio</i>				-3.06	-0.96						
<i>Sharpe Ratio</i>				0.01	0.76						
<i>Index Sharpe Ratio</i>				0.35	1.02						
<i>Standard Deviation</i>				20.13	13.49						
<i>Index Standard Deviation</i>				18.83	12.37						
Kayne Anderson SCC	7.24		28.12					3.83	9/1/2018	\$ 224,291,142	1.43
Russell 2000 Index	2.10		16.98					-8.89	9/1/2018		
Excess Return VS Russell 2000 Index	5.14		11.14					12.72	9/1/2018		
MSCI ACWI IMI (\$N)	3.37		16.07					0.82	9/1/2018		
Excess Return VS MSCI ACWI IMI (\$N)	3.87		12.05					3.01	9/1/2018		

Global Public Stock Performance

Composite / Manager	Quarter	Fiscal YTD	CYTD	1 Year	3 Years	5 Years	10 Years	ITD	Inception Date	Market Value	% of Total
TimesSquare	7.39	10.15	31.87	10.15	14.92	8.53	16.03	11.78	4/1/2005	\$ 160,855,791	1.03
Russell 2500 Growth Index	4.14	6.13	23.92	6.13	16.14	9.98	15.67	10.22	4/1/2005		
Excess Return VS Russell 2500 Growth Index	3.24	4.02	7.96	4.02	-1.21	-1.46	0.36	1.57	4/1/2005		
MSCI ACWI IMI (\$N)	3.37	4.56	16.07	4.56	11.42	6.03	10.32	6.83	4/1/2005		
Excess Return VS MSCI ACWI IMI (\$N)	4.02	5.59	15.80	5.59	3.51	2.49	5.71	4.95	4/1/2005		
<i>Beta</i>				1.02	0.97	0.95	0.93				
<i>Information Ratio</i>				1.02	-0.24	-0.29	0.23				
<i>Sharpe Ratio</i>				0.31	0.86	0.52	0.97				
<i>Index Sharpe Ratio</i>				0.15	0.91	0.57	0.87				
<i>Standard Deviation</i>				25.56	16.18	15.51	16.04				
<i>Index Standard Deviation</i>				24.74	16.30	15.96	16.86				
Portable Alpha Composite	2.92	7.27	3.53	7.27	13.51	9.65	18.12	6.65	10/1/2007	\$ 7,760,690	0.05
S&P 500 - Total Return + 1%	4.43	11.42	18.83	11.42	15.19	11.71	15.70	9.03	10/1/2007		
Excess Return VS S&P 500 - Total Return + 1%	-1.52	-4.15	-15.31	-4.15	-1.68	-2.06	2.42	-2.39	10/1/2007		
MSCI ACWI IMI (\$N)	3.37	4.56	16.07	4.56	11.42	6.03	10.32	4.42	10/1/2007		
Excess Return VS MSCI ACWI IMI (\$N)	-0.45	2.71	-12.55	2.71	2.09	3.62	7.80	2.23	10/1/2007		

Global Public Stock Performance

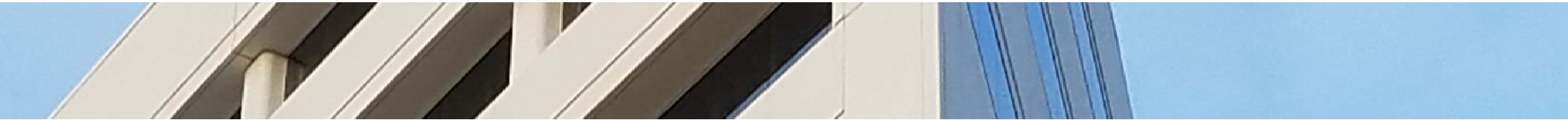
Composite / Manager	Quarter	Fiscal YTD	CYTD	1 Year	3 Years	5 Years	10 Years	ITD	Inception Date	Market Value	% of Total
Active Non-US Developed Equity	2.57	-2.68	13.30	-2.68	8.83	2.18	9.71	2.64	12/1/2007	\$ 734,342,389	4.69
MSCI ACWI IMI (\$N)	3.37	4.56	16.07	4.56	11.42	6.03	10.32	4.56	12/1/2007		
Excess Return VS MSCI ACWI IMI (\$N)	-0.79	-7.24	-2.78	-7.24	-2.59	-3.85	-0.61	-1.92	12/1/2007		
Active Non U.S. Equity Dynamic	2.96	-1.74	13.53	-1.74	9.43	2.74			12/1/2007		
Excess Return VS Active Non U.S. Eq Dynamic	-0.39	-0.94	-0.24	-0.94	-0.60	-0.56			12/1/2007		
Beta				0.87	0.92	0.94	0.92				
Information Ratio				-1.59	-0.46	-0.59	0.18				
Sharpe Ratio				-0.31	0.69	0.14	0.64				
Index Sharpe Ratio				0.13	0.89	0.44	0.57				
Standard Deviation				15.12	11.40	12.43	14.12				
Index Standard Deviation				16.86	11.31	11.74	14.36				
Acadian Intl Equity	1.61	-2.44	11.55	-2.44				-3.89	5/1/2018	\$ 273,912,331	1.75
MSCI EAFE (\$N)	3.68	1.08	14.03	1.08				-2.06	5/1/2018		
Excess Return VS MSCI EAFE (\$N)	-2.07	-3.52	-2.48	-3.52				-1.83	5/1/2018		
MSCI ACWI IMI (\$N)	3.37	4.56	16.07	4.56				3.71	5/1/2018		
Excess Return VS MSCI ACWI IMI (\$N)	-1.76	-7.00	-4.53	-7.00				-7.60	5/1/2018		
Beta				0.98							
Information Ratio				-0.90							
Sharpe Ratio				-0.31							
Index Sharpe Ratio				-0.08							
Standard Deviation				14.74							
Index Standard Deviation				14.60							
MFS	4.18	5.65	15.45	5.65	8.83	6.11		9.61	4/1/2010	\$ 188,308,849	1.20
MSCI EAFE (\$N)	3.68	1.08	14.03	1.08	9.11	2.25		5.09	4/1/2010		
Excess Return VS MSCI EAFE (\$N)	0.50	4.57	1.42	4.57	-0.28	3.86		4.52	4/1/2010		
MSCI ACWI IMI (\$N)	3.37	4.56	16.07	4.56	11.42	6.03		8.24	4/1/2010		
Excess Return VS MSCI ACWI IMI (\$N)	0.81	1.09	-0.63	1.09	-2.59	0.08		1.37	4/1/2010		
Beta				0.80	0.83	0.78					
Information Ratio				0.86	0.05	0.86					
Sharpe Ratio				0.29	0.78	0.56					
Index Sharpe Ratio				-0.08	0.71	0.11					
Standard Deviation				12.57	10.32	10.50					
Index Standard Deviation				14.60	10.97	12.17					
KBI	1.89	-3.36	0.51	-3.36	9.98	2.05		5.48	4/1/2010	\$ 1,450,039	0.01

Global Public Stock Performance

Composite / Manager	Quarter	Fiscal YTD	CYTD	1 Year	3 Years	5 Years	10 Years	ITD	Inception Date	Market Value	% of Total
Principal	3.78	-4.68	16.66	-4.68	10.48	5.65	12.53	4.91	12/1/2007	\$ 139,760,000	0.89
MSCI World x-US Small (\$N)	1.76	-6.17	12.88	-6.17	8.38	3.39	9.19	3.47	12/1/2007		
Excess Return VS MSCI World x-US Small (\$N)	2.02	1.49	3.78	1.49	2.10	2.25	3.34	1.44	12/1/2007		
MSCI ACWI IMI (\$N)	3.37	4.56	16.07	4.56	11.42	6.03	10.32	4.56	12/1/2007		
Excess Return VS MSCI ACWI IMI (\$N)	0.41	-9.24	0.59	-9.24	-0.94	-0.39	2.21	0.35	12/1/2007		
Beta				1.05	1.05	1.01	0.98				
Information Ratio				0.60	0.92	1.02	1.37				
Sharpe Ratio				-0.38	0.73	0.41	0.79				
Index Sharpe Ratio				-0.52	0.58	0.20	0.54				
Standard Deviation				17.32	13.00	12.97	15.14				
Index Standard Deviation				16.28	12.09	12.61	15.18				
Schroder	1.09	-11.23	10.71	-11.23	8.62	3.94		8.33	5/1/2012	\$ 130,911,170	0.84
MSCI EAFE Small Cap (\$N) Index	1.71	-6.35	12.55	-6.35	9.06	4.40		8.34	5/1/2012		
Excess Return VS MSCI EAFE Small (\$N) Index	-0.62	-4.88	-1.83	-4.88	-0.45	-0.46		-0.01	5/1/2012		
MSCI ACWI IMI (\$N)	3.37	4.56	16.07	4.56	11.42	6.03		8.93	5/1/2012		
Excess Return VS MSCI ACWI IMI (\$N)	-2.28	-15.79	-5.36	-15.79	-2.80	-2.09		-0.60	5/1/2012		
Beta				1.16	1.13	1.06					
Information Ratio				-1.25	0.04	0.04					
Sharpe Ratio				-0.70	0.56	0.27					
Index Sharpe Ratio				-0.54	0.63	0.28					
Standard Deviation				18.78	14.04	13.64					
Index Standard Deviation				16.09	12.23	12.57					

Global Public Stock Performance

Composite / Manager	Quarter	Fiscal YTD	CYTD	1 Year	3 Years	5 Years	10 Years	ITD	Inception Date	Market Value	% of Total
Active Emerging Market Equity	2.56	5.86	12.82	5.86	8.34	1.94	6.41	4.37	7/1/2006	\$ 246,153,692	1.57
MSCI Emerging Markets (\$N)	0.61	1.21	10.58	1.21	10.66	2.49	5.81	5.14	7/1/2006		
Excess Return VS MSCI Emg Markets (\$N)	1.95	4.66	2.24	4.66	-2.32	-0.55	0.60	-0.77	7/1/2006		
MSCI ACWI IMI (\$N)	3.37	4.56	16.07	4.56	11.42	6.03	10.32	6.04	7/1/2006		
Excess Return VS MSCI ACWI IMI (\$N)	-0.81	1.30	-3.26	1.30	-3.08	-4.09	-3.91	-1.67	7/1/2006		
<i>Beta</i>				0.92	0.91	0.88	0.90				
<i>Information Ratio</i>				1.47	-0.58	-0.04	0.32				
<i>Sharpe Ratio</i>				0.24	0.56	0.10	0.37				
<i>Index Sharpe Ratio</i>				-0.07	0.68	0.10	0.28				
<i>Standard Deviation</i>				15.72	12.94	14.20	15.97				
<i>Index Standard Deviation</i>				16.88	13.70	15.63	17.43				
AXIOM INVESTORS	2.56		14.33					14.33	1/1/2019	\$ 245,819,055	1.57
MSCI Emerging Markets (\$N)	0.61		10.58					10.58	1/1/2019		
Excess Return VS MSCI Emg Markets (\$N)	1.95		3.75					3.75	1/1/2019		
MSCI ACWI IMI (\$N)	3.37		16.07					16.07	1/1/2019		
Excess Return VS MSCI ACWI IMI (\$N)	-0.81		-1.74					-1.74	1/1/2019		
Russell Transition	3.56	4.64	13.34	4.64	8.82	1.68	6.82	1.50	11/1/2007	\$ 334,638	0.00

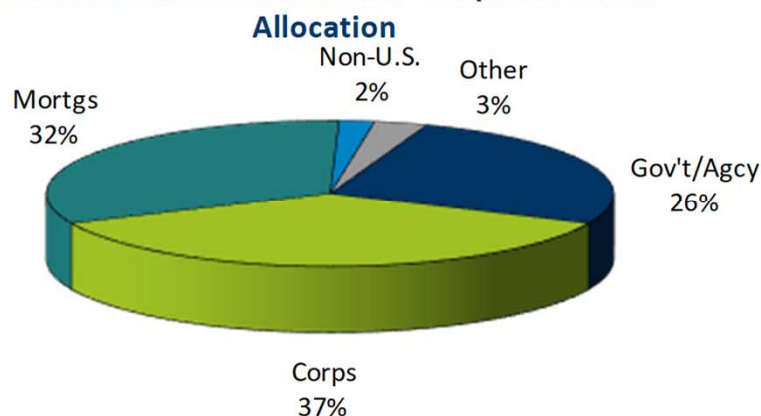


Risk Reduction & Mitigation

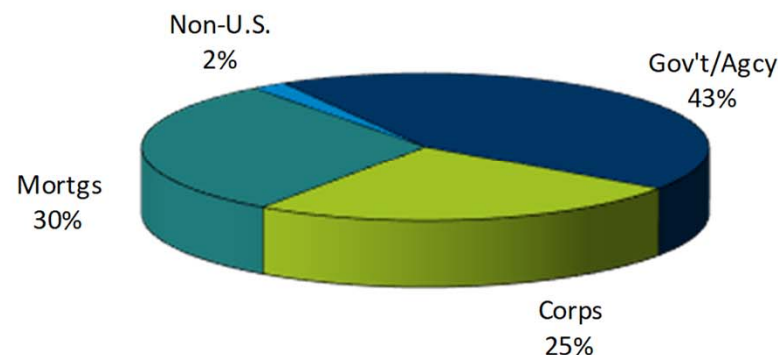
Risk Reduction & Mitigation Investment Structure

RISK REDUCTION & MITIGATION			
Manager	Benchmark	Market Value	Actual %
BlackRock Core Active	Bloomberg U.S. Aggregate	\$ 1,161,419,323	39.5%
MacKay Shields Core Inv Grade	Bloomberg U.S. Aggregate	\$ 892,915,647	30.4%
Prudential Core Conservative	Bloomberg U.S. Aggregate	\$ 842,525,611	28.7%
Risk Reduction Cash Overlay	Bloomberg U.S. Aggregate	\$ 40,828,078	1.4%
Domestic Core Fixed Income Comp		\$ 2,937,688,659	87.0%
BlackRock Global Fixed Income	Bloomberg Global Aggregate Hdg	\$ 394,704,859	
Manulife Core Global Aggregate	Bloomberg Global Aggregate Hdg	\$ 55,007	
Global Core Fixed Income Comp		\$ 394,759,866	11.7%
Cash Composite		\$ 45,770,206	1.4%
RISK REDUCTION & MITIGATION COMPOSITE		88.3% Bloomberg U.S. Aggregate / 11.7% Bloomberg Global Aggregate Hdg	\$ 3,378,218,731

Actual Domestic Fixed Income Composite Sector Allocation



Bloomberg Aggregate Sector Allocation



Risk Reduction & Mitigation Composite – Performance

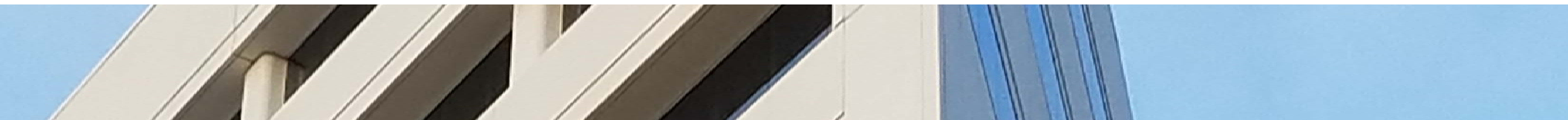
Composite / Manager	Quarter	Fiscal YTD	CYTD	1 Year	3 Years	5 Years	10 Years	ITD	Inception Date	Market Value	% of Total
RISK REDUCTION & MITIGATION	3.10	7.93	6.28	7.93	2.61	3.10		2.92	4/1/2013	\$ 3,378,218,731	21.59
Risk Reduction & Mitigation BM	3.06	7.85	6.10	7.85	2.41	3.03		2.76	4/1/2013		
Excess Return VS Risk Reduc & Mitig BM	0.04	0.08	0.18	0.08	0.21	0.07		0.16	4/1/2013		
Risk Red & Mitigation Dyn BM	3.05	7.82	6.04	7.82	2.46	3.09		2.82	4/1/2013		
Excess Return VS Risk Red & Mitigation Dyn BM	0.05	0.11	0.24	0.11	0.15	0.02		0.10	4/1/2013		
Beta				0.99	0.97	0.94					
Information Ratio				0.97	1.53	0.23					
Sharpe Ratio				1.94	0.51	0.86					
Index Sharpe Ratio				1.87	0.37	0.78					
Standard Deviation				2.95	2.68	2.71					
Index Standard Deviation				2.96	2.77	2.76					
Domestic Core Fixed Income	3.18	8.14	6.44	8.14	2.53	3.07	4.54	7.07	6/1/1985	\$ 2,937,688,659	18.77
Bloomberg Barclays U.S. Aggregate Bond Index	3.08	7.87	6.11	7.87	2.31	2.95	3.90	6.62	6/1/1985		
Excess Return VS BBG U.S. Agg Bond Index	0.10	0.27	0.33	0.27	0.22	0.12	0.64	0.44	6/1/1985		
Beta				1.01	1.00	0.99	0.99				
Information Ratio				2.35	2.21	0.90	1.16				
Sharpe Ratio				1.91	0.44	0.82	1.37				
Index Sharpe Ratio				1.81	0.33	0.72	1.02				
Standard Deviation				3.10	2.91	2.85	3.05				
Index Standard Deviation				3.08	3.90	2.87	2.87				
Global Core Fixed Income	2.67	6.14	5.64	6.14	2.49	2.39		4.27	5/1/2011	\$ 394,759,866	2.52
Bloomberg Barclays Global Aggregate (USDH)	2.92	7.80	6.00	7.80	2.95	3.82		4.09	5/1/2011		
Excess Return VS Bloomberg Global Agg (USDH)	-0.25	-1.66	-0.36	-1.66	-0.46	-1.43		0.18	5/1/2011		
Beta				0.90	0.93	0.98					
Information Ratio				-0.98	-0.23	0.34					
Sharpe Ratio				1.79	0.61	0.45					
Index Sharpe Ratio				2.26	0.68	0.29					
Standard Deviation				2.44	2.29	3.87					
Index Standard Deviation				2.43	2.32	2.88					
Cash	1.51	5.31	2.79	5.31	3.60	2.27	3.14	4.68	3/1/1989	\$ 45,770,206	0.29
ICE BofAML US 3-Mo Treasury Bill Index G001	0.64	2.31	1.24	2.31	1.38	0.87	0.49	3.11	3/1/1989		
Excess Return VS ICE BofAML US 3-Mo Treasury Bill I	0.87	3.00	1.55	3.00	2.21	1.40	2.65	1.57	3/1/1989		
Cash Dynamic Benchmark	1.32	4.98	2.63	4.98	3.31	2.26			3/1/1989		
Excess Return VS Cash Dynamic Benchmark	0.19	0.33	0.16	0.33	0.29	0.01			3/1/1989		

Risk Reduction & Mitigation – Performance

Composite / Manager	Quarter	Fiscal YTD	CYTD	1 Year	3 Years	5 Years	10 Years	ITD	Inception Date	Market Value	% of Total
Domestic Core Fixed Income	3.18	8.14	6.44	8.14	2.53	3.07	4.54	7.07	6/1/1985	\$ 2,937,688,659	18.77
Bloomberg Barclays U.S. Aggregate Bond Index	3.08	7.87	6.11	7.87	2.31	2.95	3.90	6.62	6/1/1985		
Excess Return VS BBG U.S. Agg Bond Index	0.10	0.27	0.33	0.27	0.22	0.12	0.64	0.44	6/1/1985		
Black Rock Core	3.10	8.40	6.55	8.40	2.75	3.36	4.58	5.61	7/1/1995	\$ 1,161,419,323	7.42
Bloomberg Barclays U.S. Aggregate Bond Index	3.08	7.87	6.11	7.87	2.31	2.95	3.90	5.22	7/1/1995		
Excess Return VS Bloomberg Barclays U.S. Aggre	0.02	0.53	0.44	0.53	0.44	0.41	0.68	0.39	7/1/1995		
Beta				1.02	1.01	0.99	1.04				
Information Ratio				2.42	2.11	1.48	1.22				
Sharpe Ratio				1.98	0.51	0.91	1.21				
Index Sharpe Ratio				1.81	0.33	0.72	1.02				
Standard Deviation				3.16	2.93	2.86	3.04				
Index Standard Deviation				3.08	2.90	2.87	2.87				
MACKAY SHIELDS	3.05	7.76	6.26	7.76	2.39	2.82		2.81	7/1/2012	\$ 892,915,647	5.71
Bloomberg Barclays U.S. Aggregate Bond Index	3.08	7.87	6.11	7.87	2.31	2.95		2.62	7/1/2012		
Excess Return VS BBG U.S. Agg Bond Index	-0.03	-0.11	0.15	-0.11	0.08	-0.13		0.19	7/1/2012		
Beta				0.97	0.99	0.97					
Information Ratio				0.12	0.90	0.00					
Sharpe Ratio				1.86	0.40	0.74					
Index Sharpe Ratio				1.81	0.33	0.72					
Standard Deviation				3.00	2.87	2.79					
Index Standard Deviation				3.08	2.90	2.87					
Prudential	3.11	7.86	6.15	7.86	2.27	3.03		3.55	6/1/2012	\$ 842,525,611	5.38
Bloomberg Barclays U.S. Aggregate Bond Index	3.08	7.87	6.11	7.87	2.31	2.95		2.60	6/1/2012		
Excess Return VS BBG U.S. Agg Bond Index	0.03	-0.01	0.04	-0.01	-0.04	0.08		0.95	6/1/2012		
Beta				0.99	1.00	1.03					
Information Ratio				0.80	0.59	0.45					
Sharpe Ratio				1.84	0.34	0.76					
Index Sharpe Ratio				1.81	0.33	0.72					
Standard Deviation				3.06	2.91	2.99					
Index Standard Deviation				3.08	2.90	2.87					

Risk Reduction & Mitigation – Performance

Composite / Manager	Quarter	Fiscal YTD	CYTD	1 Year	3 Years	5 Years	10 Years	ITD	Inception Date	Market Value	% of Total
Global Core Fixed Income	2.67	6.14	5.64	6.14	2.49	2.39		4.27	5/1/2011	\$ 394,759,866	2.52
Bloomberg Barclays Global Aggregate (USDH)	2.92	7.80	6.00	7.80	2.95	3.82		4.09	5/1/2011		
Excess Return VS Bloomberg Barclays Global Aggregate	-0.25	-1.66	-0.36	-1.66	-0.46	-1.43		0.18	5/1/2011		
Blackrock Glb Fixed Income								2.79	5/1/2019	\$ 394,704,859	2.52
Bloomberg Barclays U.S. Aggregate Bond Index								3.05	5/1/2019		
Excess Return VS Bloomberg Barclays U.S. Aggregate Bond Index								-0.27	5/1/2019		
Manulife	15.63	19.54	18.98	19.54	6.64	5.25		5.11	5/1/2011	\$ 55,007	0.00
Bloomberg Barclays Global Aggregate (USDH)	2.92	7.80	6.00	7.80	2.95	3.82		4.09	5/1/2011		
Excess Return VS Bloomberg Barclays Global Aggregate	12.71	11.74	12.98	11.74	3.68	1.43		1.02	5/1/2011		
Cash	1.51	5.31	2.79	5.31	3.60	2.27	3.14	4.68	3/1/1989	\$ 45,770,206	0.29
ICE BofAML US 3-Mo Treasury Bill Index	0.64	2.31	1.24	2.31	1.38	0.87	0.49	3.11	3/1/1989		
Excess Return VS ICE BofAML US 3 Mo T-Bill Index	0.87	3.00	1.55	3.00	2.21	1.40	2.65	1.57	3/1/1989		
Cash Dynamic Benchmark	1.32	4.98	2.63	4.98	3.31	2.26			3/1/1989		
Excess Return VS Cash Dynamic Benchmark	0.19	0.33	0.16	0.33	0.29	0.01			3/1/1989		
CASH ACCOUNT	0.83	2.64	1.40	2.64	1.68	1.37	2.54	4.48	3/1/1989	\$ 41,874,066	0.27
ICE BofAML US 3-Mo Treasury Bill Index	0.64	2.31	1.24	2.31	1.38	0.87	0.49	3.11	3/1/1989		
Excess Return VS ICE BofAML US 3-Mo T-Bill Index	0.19	0.33	0.16	0.33	0.29	0.50	2.05	1.37	3/1/1989		
SUSPENSE ACCOUNT	17.21	174.28	63.25	174.28	140.05	99.75		130.37	7/1/2010	\$ 3,896,141	0.02
Risk Reduction Cash Overlay	6.64	17.53	12.14	17.53	3.47			6.04	9/1/2014	\$ 40,828,078	0.26
Risk Reduction & Mitigation BM	3.06	7.85	6.10	7.85	2.41			2.95	9/1/2014		
Excess Return VS Risk Reduction & Mitigation BM	3.58	9.68	6.04	9.68	1.07			3.09	9/1/2014		
Parametric Risk Mitigation O/L	3.03	7.77	5.01	7.77	3.47			2.54	9/1/2014	\$ 40,828,078	0.26
Cash Overlay Benchmark	3.08	7.87	6.11	7.87	2.31			1.38	9/1/2014		
Excess Return VS Cash Overlay Benchmark	-0.05	-0.10	-1.10	-0.10	1.16			1.16	9/1/2014		



Credit Oriented Fixed Income

Credit Oriented Fixed Income – Investment Structure

CREDIT ORIENTED FIXED INCOME			
Manager	Benchmark	Market Value	Actual %
Guggenheim Global High Yield	Bloomberg Global High Yield	\$ (37)	0.0%
PineBridge High Yield	Bloomberg Global High Yield	\$ 184,427,646	22.7%
CVC Global Credit Opp	Bloomberg Global High Yield	\$ 208,949,519	25.7%
Ellington HF	Bloomberg Global High Yield	\$ 191,624,984	23.6%
HIG II	Bloomberg Global High Yield	\$ 4,357,001	0.5%
Credit Cash Overlay	Credit Oriented FI Blend	\$ 222,712,182	27.4%
Liquid Credit Composite		\$ 812,071,295	35.4%
Lazard Emerging Market Debt	JP Morgan EMD Blend	\$ 338,149,203	
Emerging Market Debt Composite		\$ 338,149,203	14.7%
Credit Oriented Hedge Funds		\$ 462,857,740	20.2%
Private Debt	Bloomberg Global High Yield	\$ 269,745,661	11.8%
High Return Seeking Debt	Bloomberg Global High Yield	\$ 412,061,309	18.0%
Illiquid Credit Composite		\$ 681,806,970	29.7%
CREDIT ORIENTED FIXED INCOME COMPOSITE		80% Bloomberg Global High Yield / 20% JP Morgan EMD Blend	\$ 2,294,885,208

Credit Oriented Fixed Income Composite – Performance

Composite / Manager	Quarter	Fiscal YTD	CYTD	1 Year	3 Years	5 Years	10 Years	ITD	Inception Date	Market Value	% of Total
CREDIT ORIENTED FIXED INCOME	2.02	4.78	3.82	4.78	5.82	3.32		4.74	4/1/2013	\$ 2,294,885,208	14.67
Credit Oriented FI BM	3.35	8.38	9.60	8.38	6.87	4.19		5.21	4/1/2013		
Excess Return VS Credit Oriented FI BM	-1.33	-3.60	-5.78	-3.60	-1.04	-0.88		-0.48	4/1/2013		
Credit Oriented FI Dynamic BM	2.14	4.75	3.94	4.75	6.39	4.04		5.86	4/1/2013		
Excess Return VS Credit Oriented FI Dynamic BM	-0.13	0.03	-0.12	0.03	-0.57	-0.72		-1.13	4/1/2013		
Beta				0.24	0.27	0.37					
Information Ratio				-0.64	-0.19	-0.15					
Sharpe Ratio				1.63	2.69	1.04					
Index Sharpe Ratio				1.02	1.25	0.74					
Standard Deviation				1.88	1.82	2.68					
Index Standard Deviation				6.20	4.47	4.46					
Liquid Credit	1.77	3.25	3.47	3.25	5.85	4.35		3.04	4/1/2013	\$ 812,071,295	5.19
BBG Global High Yield Index	2.97	7.76	9.49	7.76	6.83	3.99		5.11	4/1/2013		
Excess Return VS BBG Global High Yield Index	-1.20	-4.51	-6.02	-4.51	-0.98	0.36		-2.07	4/1/2013		
Liquid Credit Dynamic BM	2.41	5.48	5.94	5.48	6.47	4.75		5.99	4/1/2013		
Excess Return VS Liquid Credit Dynamic BM	-0.64	-2.23	-2.47	-2.23	-0.62	-0.41		-2.95	4/1/2013		
Beta				0.17	0.24	0.46					
Information Ratio				-0.75	-0.20	0.09					
Sharpe Ratio				0.46	2.29	0.71					
Index Sharpe Ratio				0.96	1.14	0.54					
Standard Deviation				2.35	2.04	5.08					
Index Standard Deviation				6.24	4.78	5.74					
Emerging Markets Debt Composite	2.05	7.08	8.01	7.08	2.92			3.15	8/1/2015	\$ 338,149,203	2.16
JP Morgan Emg Mkts SOV50 LM50 Bond Index~~	4.86	10.77	10.03	10.77	4.91			5.57	8/1/2015		
Excess Return VS JPM EMD SOV50 LM50 Bond Idx~~	-2.81	-3.69	-2.02	-3.69	-2.00			-2.42	8/1/2015		
LAZARD EM MKT DEBT TR	2.05	7.08	8.01	7.08	2.92			3.15	8/1/2015	\$ 338,149,203	2.16
JP Morgan Emg Mkts SOV50 LM50 Bond Idx~~	4.86	10.77	10.03	10.77	4.91			5.57	8/1/2015		
Excess Return VS JPM EMD Blend	-2.81	-3.69	-2.02	-3.69	-2.00			-2.42	8/1/2015		
Beta				1.09	0.92						
Information Ratio				-0.91	-0.60						
Sharpe Ratio				0.49	0.22						
Index Sharpe Ratio				1.04	0.50						
Standard Deviation				9.71	6.87						
Index Standard Deviation				8.16	6.72						

Credit Oriented Fixed Income – Performance

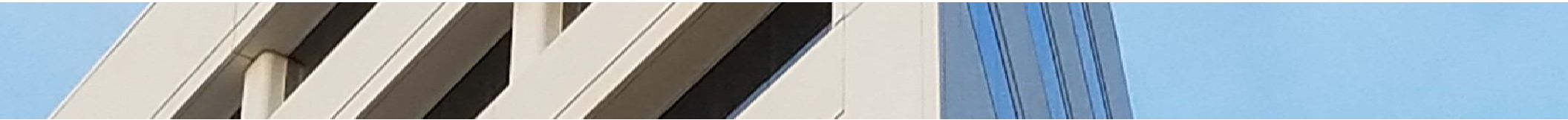
Composite / Manager	Quarter	Fiscal YTD	CYTD	1 Year	3 Years	5 Years	10 Years	ITD	Inception Date	Market Value	% of Total
Illiquid Credit	2.59	5.65	2.38	5.65	8.85	6.73	13.01	7.65	12/1/2006	\$ 681,806,970	4.36
Illiquid Credit BM	2.97	7.76	9.49	7.76	8.52	5.10			12/1/2006		
Excess Return VS Illiquid Credit BM	-0.38	-2.11	-7.10	-2.11	0.34	1.63			12/1/2006		
BBG Global High Yield Index	2.97	7.76	9.49	7.76	6.83	3.99	9.08	7.14	12/1/2006		
Excess Return VS BBG Global High Yield Index	-0.38	-2.11	-7.10	-2.11	2.03	2.75	3.93	0.52	12/1/2006		
Illiquid Credit Dynamic BM	1.81	3.98	0.34	3.98	8.50	6.73			12/1/2006		
Excess Return VS Illiquid Credit Dynamic BM	0.79	1.68	2.05	1.68	0.35	0.01			12/1/2006		
Beta				-0.10	-0.06	-0.02	0.13				
Information Ratio				-0.02	0.33	0.51	0.51				
Sharpe Ratio				2.56	3.04	2.26	2.10				
Index Sharpe Ratio				0.96	1.41	0.63	1.16				
Standard Deviation				2.08	3.02	3.17	6.15				
Index Standard Deviation				6.24	5.07	5.85	7.25				
Credit Oriented Hedge Funds	1.58	4.62	2.71	4.62	6.30	3.30	7.77	5.51	2/1/2007	\$ 462,857,740	2.96
Credit Oriented Hedge Funds BM	2.97	7.76	9.49	7.76	5.60	3.38			2/1/2007		
Excess Return VS COHF BM	-1.39	-3.15	-6.77	-3.15	0.70	-0.08			2/1/2007		
BBG Global High Yield Index	2.97	7.76	9.49	7.76	6.83	3.99	9.08	7.10	2/1/2007		
Excess Return VS BBG Global High Yield Index	-1.39	-3.15	-6.77	-3.15	-0.53	-0.69	-1.31	-1.59	2/1/2007		
Beta				-0.16	-0.10	-0.01	0.27				
Information Ratio				-0.39	-0.09	-0.11	-0.21				
Sharpe Ratio				0.76	1.86	0.86	1.74				
Index Sharpe Ratio				0.87	1.14	0.54	1.12				
Standard Deviation				3.02	2.65	2.82	3.89				
Index Standard Deviation				6.24	4.78	5.74	7.22				

Credit Oriented Fixed Income – Performance

Composite / Manager	Quarter	Fiscal YTD	CYTD	1 Year	3 Years	5 Years	10 Years	ITD	Inception Date	Market Value	% of Total
LAZARD EM MKT DEBT TR	2.05	7.08	8.01	7.08	2.92			3.15	8/1/2015	\$ 338,149,203	2.16
JP Morgan Emg Mkts SOV50 LM50 Bond Index~	4.86	10.77	10.03	10.77	4.91			5.57	8/1/2015		
Excess Return VS JPM Emg Mkts SOV50 LM50 Bo	-2.81	-3.69	-2.02	-3.69	-2.00			-2.42	8/1/2015		
Beta				1.09	0.92						
Information Ratio				-0.91	-0.60						
Sharpe Ratio				0.49	0.22						
Index Sharpe Ratio				1.04	0.50						
Standard Deviation				9.71	6.87						
Index Standard Deviation				8.16	6.72						
GUGGENHEIM GLOBAL HY									11/1/2015	\$ (37)	0.00
PINEBRIDGE HY	3.09		10.68					6.50	10/1/2018	\$ 184,427,646	1.18
BBG Global High Yield Index	2.97		9.49					5.67	10/1/2018		
Excess Return VS BBG Global High Yield Index	0.13		1.20					0.83	10/1/2018		
CVC Global Credit Opp	-2.25	-5.28	-4.14	-5.28	5.36			3.99	11/1/2015	\$ 208,949,519	1.34
BBG Global High Yield Index	2.97	7.76	9.49	7.76	6.83			6.87	11/1/2015		
Excess Return VS BBG Global High Yield Index	-5.22	-13.04	-13.63	-13.04	-1.46			-2.87	11/1/2015		
S&P LSTA Leveraged Loan Index	1.68	3.97	5.74	3.97	5.24			4.97	11/1/2015		
Excess Return VS S&P LSTA Leveraged Loan Index	-3.93	-9.24	-9.88	-9.24	0.12			-0.98	11/1/2015		
Beta				-0.29	-0.20						
Information Ratio				-1.35	-0.20						
Sharpe Ratio				-1.54	0.92						
Index Sharpe Ratio				0.87	1.14						
Standard Deviation				4.93	4.35						
Index Standard Deviation				6.24	4.78						

Credit Oriented Fixed Income – Performance

Composite / Manager	Quarter	Fiscal YTD	CYTD	1 Year	3 Years	5 Years	10 Years	ITD	Inception Date	Market Value	% of Total
Ellington HF	2.28	4.72	2.78	4.72				4.57	1/1/2017	\$ 191,624,984	1.22
BBG Global High Yield Index	2.97	7.76	9.49	7.76				6.12	1/1/2017		
Excess Return VS BBG Global High Yield Idx	-0.68	-3.05	-6.70	-3.05				-1.55	1/1/2017		
HFRI RV: Fixed Income-Asset Backed	1.43	3.59	3.14	3.59				5.87	1/1/2017		
Excess Return VS HFRI RV: FI-Asset Backed	0.86	1.13	-0.35	1.13				-1.30	1/1/2017		
Beta				-0.12							
Information Ratio				-0.41							
Sharpe Ratio				1.74							
Index Sharpe Ratio				0.87							
Standard Deviation				1.38							
Index Standard Deviation				6.24							
HIG II	3.85	16.91	-3.46	16.91	11.02	8.38		4.43	7/1/2010	\$ 4,357,001	0.03
BBG Global High Yield Index	2.97	7.76	9.49	7.76	6.83	3.99		7.41	7/1/2010		
Excess Return VS BBG Global High Yield Idx	0.88	9.15	-12.94	9.15	4.19	4.39		-2.98	7/1/2010		
HFRI RV: Fixed Income-Asset Backed	1.43	3.59	3.14	3.59	6.67	4.85		7.68	7/1/2010		
Excess Return VS HFRI RV: FI-Asset Backed	2.43	13.32	-6.59	13.32	4.34	3.53		-3.25	7/1/2010		
Beta				-1.12	-0.66	-0.31					
Information Ratio				0.62	0.41	0.42					
Sharpe Ratio				1.09	0.99	0.84					
Index Sharpe Ratio				0.87	1.14	0.54					
Standard Deviation				17.38	11.07	9.83					
Index Standard Deviation				6.24	4.78	5.74					
Napier Park LP	1.51	5.72	3.04	5.72				6.19	12/1/2016	\$ 348,370,432	2.23
BBG Global High Yield Index	2.97	7.76	9.49	7.76				6.63	12/1/2016		
Excess Return VS BBG Global High Yield Idx	-1.46	-2.05	-6.45	-2.05				-0.44	12/1/2016		
Beta				-0.12							
Information Ratio				-0.26							
Sharpe Ratio				1.20							
Index Sharpe Ratio				0.87							
Standard Deviation				2.85							
Index Standard Deviation				6.24							



Real Assets

Real Assets – Investment Structure

REAL ASSETS				
Manager/Composite	Benchmark	Market Value		Actual %
		\$	(\$000)	
Deutsche Listed Infrastructure	DJ Brookfield Global Infrastructure	\$	136,967,290	10.5%
Harvest MLP Alpha	Alerian MLP Index	\$	294,383,937	22.6%
PIMCO TIPS	Bloomberg U.S. TIPS Index	\$	478,289,461	36.8%
PIMCO Commodities	Bloomberg Commodity Index	\$	206,040,271	15.8%
Real Assets Cash Overlay	Real Assets BM	\$	184,454,575	14.2%
<hr/>				
Blend (18.75% Infrastructure / 25%				
Liquid Real Assets	Alerian MLP / 37.5% TIPS / 18.75% Commodity)	\$	1,300,135,534	41.8%
<hr/>				
Blend (30% Infrastructure / 70%				
Illiquid Real Assets	Commodity)	\$	735,949,796	23.7%
DFA Real Estate Securities	Wilshire Global REIT	\$	220,003,495	60.9%
Security Capital REIT	Wilshire Global REIT	\$	141,228,792	39.1%
<hr/>				
Liquid Real Estate	Wilshire Global REIT	\$	361,232,287	11.6%
<hr/>				
Illiquid Real Estate	Wilshire Global REIT	\$	711,372,605	22.9%
<hr/>				
Market Neutral Hedge Funds / Risk Premia		\$	3,140,615	0.1%
<hr/>				
REAL ASSETS COMPOSITE	35% Wilshire Global REIT / 10% Alerian MLP / 15% DJ Brookfield Global Infrastructure / 15% TIPS / 25% Bloomberg Commodity	\$	3,111,830,837	

Real Assets Composite – Performance

Composite / Manager	Quarter	Fiscal YTD	CYTD	1 Year	3 Years	5 Years	10 Years	ITD	Inception Date	Market Value	% of Total
REAL ASSETS	1.63	4.61	7.44	4.61	5.86	3.87		4.99	4/1/2013	\$ 3,111,830,837	19.89
Real Assets BM	1.39	4.89	12.97	4.89	6.57	3.44		4.93	4/1/2013		
Excess Return VS Real Assets BM	0.24	-0.28	-5.53	-0.28	-0.71	0.43		0.06	4/1/2013		
Real Assets Dynamic BM	1.95	5.59	8.84	5.59	5.59	3.50		4.25	4/1/2013		
Excess Return VS Real Assets Dynamic BM	-0.32	-0.98	-1.40	-0.98	0.27	0.37		0.74	4/1/2013		
Beta				0.48	0.44	0.38					
Information Ratio				0.19	0.14	0.28					
Sharpe Ratio				0.68	1.31	0.85					
Index Sharpe Ratio				0.24	0.64	0.35					
Standard Deviation				5.56	4.44	4.93					
Index Standard Deviation				10.92	7.95	6.98					
Liquid Real Estate	2.23	11.24	16.82	11.24	5.93	7.17	13.52	11.68	12/1/2008	\$ 361,232,287	2.31
Wilshire Global REIT Total Return Index	1.57	10.05	17.05	10.05	4.79	6.76	13.99	13.71	12/1/2008		
Excess Return VS Wilshire Global REIT TR Index	0.66	1.18	-0.22	1.18	1.14	0.42	-0.47	-2.03	12/1/2008		
Liquid Real Estate Dyn BM	1.28	10.09	16.37	10.09	4.19	7.21			12/1/2008		
Excess Return VS Liquid Real Estate Dyn BM	0.95	1.14	0.46	1.14	1.74	-0.03			12/1/2008		
Beta				0.86	0.88	0.96	0.96				
Information Ratio				0.63	0.68	0.56	0.64				
Sharpe Ratio				0.75	0.45	0.53	0.85				
Index Sharpe Ratio				0.54	0.29	0.38	0.66				
Standard Deviation				12.37	10.46	12.29	14.92				
Index Standard Deviation				14.42	11.71	12.29	14.80				
Illiquid Real Estate	2.05	8.64	3.91	8.64	9.35	11.89	9.58	6.73	5/1/2007	\$ 711,372,605	4.55
Illiquid Real Estate BM	1.57	10.05	17.05	10.05	8.18	10.69			5/1/2007		
Excess Return VS Illiquid Real Estate BM	0.48	-1.41	-13.14	-1.41	1.17	1.21			5/1/2007		
Wilshire Global REIT Total Return Index	1.57	10.05	17.05	10.05	4.79	6.76	13.99	3.92	5/1/2007		
Excess Return VS Wilshire Global REIT TR Index	0.48	-1.41	-13.14	-1.41	4.56	5.13	-4.41	2.81	5/1/2007		
Beta				0.05	-0.04	0.04	-0.14				
Information Ratio				0.15	0.59	0.59	-0.15				
Sharpe Ratio				2.45	2.33	2.81	1.09				
Index Sharpe Ratio				0.54	0.29	0.46	0.87				
Standard Deviation				4.09	4.79	4.85	9.26				
Index Standard Deviation				14.42	11.71	12.72	14.93				

Real Assets Composite – Performance

Composite / Manager	Quarter	Fiscal YTD	CYTD	1 Year	3 Years	5 Years	10 Years	ITD	Inception Date	Market Value	% of Total
Liquid Real Assets	1.11	1.58	11.29	1.58	0.24	-5.55		-0.74	9/1/2009	\$ 1,300,135,534	8.31
Liquid Real Assets BM	1.76	4.04	11.44	4.04	0.08	-6.93			9/1/2009		
Excess Return VS Liquid Real Assets BM	-0.64	-2.46	-0.15	-2.46	0.16	1.38			9/1/2009		
Liquid Real Assets Dyn BM	1.52	2.44	9.84	2.44	2.20	-5.75			9/1/2009		
Excess Return VS Liquid Real Assets Dyn BM	-0.40	-0.86	1.44	-0.86	-1.96	0.20			9/1/2009		
Beta				1.02	0.93	0.94					
Information Ratio				-0.72	0.22	0.46					
Sharpe Ratio				-0.03	-0.07	-0.38					
Index Sharpe Ratio				0.19	-0.13	-0.48					
Standard Deviation				9.63	9.41	15.92					
Index Standard Deviation				9.08	9.69	16.39					
Illiquid Real Assets	2.00	3.77	-1.29	3.77	8.93	1.85	8.68	-11.04	1/1/2007	\$ 735,949,796	4.70
Illiquid Real Assets BM	0.54	-0.96	9.74	-0.96	6.83	-1.46			1/1/2007		
Excess Return VS Illiquid Real Assets BM	1.46	4.73	-11.03	4.73	2.10	3.31			1/1/2007		
Illiquid Real Assets Dyn BM	3.61	6.92	6.84	6.92	9.07	1.25			1/1/2007		
Excess Return VS Illiquid Real Assets Dyn BM	-1.61	-3.15	-8.13	-3.15	-0.14	0.60			1/1/2007		
Beta				-0.16	-0.05	0.03					
Information Ratio				0.55	0.43	0.42					
Sharpe Ratio				0.94	2.23	0.41					
Index Sharpe Ratio				-0.31	0.59	-0.22					
Standard Deviation				4.44	4.43	7.58					
Index Standard Deviation				10.50	9.01	10.98					
Market Neutral Hedge Fund	3.98	6.92	3.68	6.92	1.83	2.12		2.39	4/1/2013	\$ 3,140,615	0.02
Libor + 2% 1 MA	1.13	4.53	2.33	4.53	3.69	3.15		2.97	4/1/2013		
Excess Return VS Libor + 2% 1 MA	2.85	2.39	1.35	2.39	-1.87	-1.03		-0.58	4/1/2013		
HFRI EH: Equity Market Neutral Index	-0.09	-0.56	1.29	-0.56	2.40	2.59		3.05	4/1/2013		
Excess Return VS HFRI EH: Equity Market Neutral Ind	4.07	7.48	2.40	7.48	-0.58	-0.48		-0.65	4/1/2013		
Beta				30.91	12.93	1.68					
Information Ratio				0.32	-0.38	-0.24					
Sharpe Ratio				0.67	0.09	0.27					
Index Sharpe Ratio				29.98	36.51	41.17					
Standard Deviation				6.90	5.03	4.59					
Index Standard Deviation				0.08	0.07	0.06					

Wilshire Consulting

Real Assets – Performance



Composite / Manager	Quarter	Fiscal YTD	CYTD	1 Year	3 Years	5 Years	10 Years	ITD	Inception Date	Market Value	% of Total
Security Capital REIT	1.69	9.89	15.04	9.89				6.66	5/1/2017	\$ 141,228,792	0.90
Wilshire Global REIT Total Return Index	1.57	10.05	17.05	10.05				7.91	5/1/2017		
Excess Return VS Wilshire Global REIT TR Idx	0.12	-0.16	-2.01	-0.16				-1.25	5/1/2017		
Dow Jones U.S. Select REIT Index	0.82	9.75	16.67	9.75				7.32	5/1/2017		
Excess Return VS Dow Jones U.S. Select REIT Ind	0.88	0.14	-1.64	0.14				-0.66	5/1/2017		
Beta				0.77							
Information Ratio				-0.01							
Sharpe Ratio				0.68							
Index Sharpe Ratio				0.54							
Standard Deviation				11.27							
Index Standard Deviation				14.42							
DFA REIT	2.25	12.49	17.72	12.49				9.24	5/1/2017	\$ 220,003,495	1.41
Wilshire Global REIT TR Index	1.57	10.05	17.05	10.05				7.91	5/1/2017		
Excess Return VS Wilshire Global REIT TR Idx	0.68	2.44	0.67	2.44				1.34	5/1/2017		
S&P Global REIT Index	1.58	10.05	16.19	10.05				7.68	5/1/2017		
Excess Return VS S&P Global REIT Index	0.67	2.44	1.53	2.44				1.57	5/1/2017		
Beta				0.92							
Information Ratio				1.36							
Sharpe Ratio				0.79							
Index Sharpe Ratio				0.54							
Standard Deviation				13.30							
Index Standard Deviation				14.42							

Wilshire Consulting

Real Assets – Performance



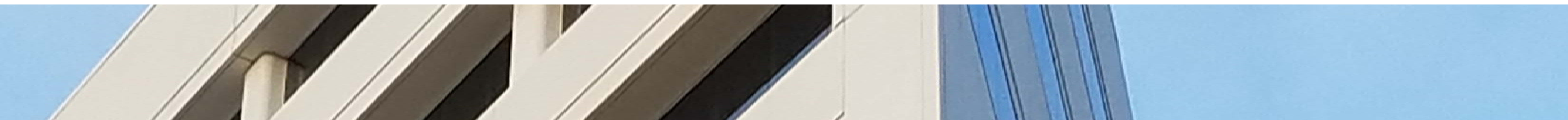
Composite / Manager	Quarter	Fiscal YTD	CYTD	1 Year	3 Years	5 Years	10 Years	ITD	Inception Date	Market Value	% of Total
Harvest MLP	-0.41	0.94	20.22	0.94	1.32	-4.89		-3.54	6/1/2014	\$ 294,383,937	1.88
Alerian MLP Index	0.12	3.09	16.96	3.09	-0.42	-7.20		-6.03	6/1/2014		
Excess Return VS Alerian MLP Index	-0.53	-2.15	3.26	-2.15	1.74	2.31		2.50	6/1/2014		
<i>Beta</i>				1.17	1.07	1.01					
<i>Information Ratio</i>				-0.35	0.70	0.75					
<i>Sharpe Ratio</i>				-0.03	0.03	-0.26					
<i>Index Sharpe Ratio</i>				0.04	-0.11	-0.42					
<i>Standard Deviation</i>				22.94	17.91	20.00					
<i>Index Standard Deviation</i>				19.48	16.48	19.38					
Deutsche Listed Infrastructure	4.89	13.67	20.68	13.67				7.68	9/1/2016	\$ 136,967,290	0.88
DJ Brookfield Gbl Infrastructure Index	4.63	13.69	21.30	13.69				9.31	9/1/2016		
Excess Return VS DJ Brookfield Gbl Infrastructur	0.26	-0.02	-0.62	-0.02				-1.63	9/1/2016		
<i>Beta</i>				0.96							
<i>Information Ratio</i>				0.46							
<i>Sharpe Ratio</i>				1.05							
<i>Index Sharpe Ratio</i>				0.95							
<i>Standard Deviation</i>				11.56							
<i>Index Standard Deviation</i>				11.99							

Wilshire Consulting

Real Assets – Performance



Composite / Manager	Quarter	Fiscal YTD	CYTD	1 Year	3 Years	5 Years	10 Years	ITD	Inception Date	Market Value	% of Total
PIMCO TIPS	2.82	4.67	6.31	4.67				3.22	11/1/2017	\$ 478,289,461	3.06
Bloomberg U.S. Treasury: US TIPS Index	2.86	4.84	6.15	4.84				3.50	11/1/2017		
Excess Return VS BBG US TIPS Index	-0.05	-0.16	0.16	-0.16				-0.28	11/1/2017		
Beta				0.98							
Information Ratio				-0.04							
Sharpe Ratio				0.76							
Index Sharpe Ratio				0.77							
Standard Deviation				3.27							
Index Standard Deviation				3.29							
PIMCO Commodities	-1.70	-7.42	8.62	-7.42				-2.72	1/1/2018	\$ 206,040,271	1.32
Bloomberg Commodity Index TR	-1.19	-6.75	5.06	-6.75				-4.55	1/1/2018		
Excess Return VS Bloomberg Commodity Index T	-0.52	-0.66	3.55	-0.66				1.83	1/1/2018		
Beta				1.10							
Information Ratio				-0.05							
Sharpe Ratio				-0.65							
Index Sharpe Ratio				-0.87							
Standard Deviation				14.69							
Index Standard Deviation				10.47							



Placement Agent Disclosure

Placement Agent Disclosure

Pursuant to New Mexico statute PERA shall not make any investment, other than investments in publicly traded equities or publicly traded fixed-income securities, unless the recipient of the investment discloses the identity of any third-party marketer who rendered services on behalf of the recipient in obtaining the investment and also discloses the amount of any fee, commission or retainer paid to the third-party marketer for the services rendered. “Third-party marketer” means a person who, on behalf of an investment fund manager or other person seeking an investment from the fund and under a written or implied agreement, receives a fee, commission or retainer for such services from the person seeking an investment from the fund.

The following investments were approved by the PERA Investment Committee and Board during the quarter, with disclosures made under the policy:

Rockwood Capital Real Estate Partners Fund XI– Rockwood Capital received final approval in the quarter for an investment up to \$50million in the Illiquid Real Estate allocation. Rockwood Capital has stated that it does use placement agent fees in some situations. However, all placement agent fees are incurred by the General Partner or its affiliates and not by the Fund.

Montagu VI., LP – Montagu Private Equity LLP received final approval in the quarter for an investment up to \$75million in the Illiquid Real Estate allocation. Montagu Private Equity LLP has stated that it did not use placement agents during the fundraising period.

Investments approved prior to the current quarter for which the fund engaged a placement agent follow:

Ardian Infrastructure V, L.P. – Ardian Group received final approval in the quarter for an investment up to €60million in the Illiquid Real Assets allocation. Ardian Group has stated that it does use placement agent fees in some situations. However, all placement agent fees are incurred by the General Partner or its affiliates and not by the Fund. Axiom Emerging Markets Equity Fund. – Axiom Investors received final approval in the quarter for an investment of \$215 million in the Liquid Equity Assets allocation. Axiom Investors did not use placement agents for our investment in the fund.

Aermont Capital Real Estate Fund IV SCPs –Aermont Capital LLP received final approval in the quarter for an investment up to Euro 50 million in the Illiquid Real Estate allocation. Aermont Capital LLP has stated that the Fund will pay all fees, costs and expenses relating to the formation and launch of the Fund, the General Partner and any Feeder Fund provided that the amount of such costs and expenses will not exceed 0.15% of Total Commitments (inclusive of VAT). Any fees, costs and expenses in excess of such amount will be borne by Aermont

Placement Agent Disclosure

Harrison Real Estate Partners VII, L.P. – Harrison Street Real Estate Capital, LLC received final approval in the quarter for an investment up to \$75 million in the Illiquid Real Estate allocation. Harrison Street Real Estate Capital, LLC has confirmed that no placement agents were used for this commitment.

TCV X, L.P. – Technology Crossover Ventures received final approval in the quarter for an investment up to \$65 million in the Illiquid Equity allocation. Technology Crossover Ventures has stated that all placement agent fees will be borne by the GP.

Kayne Anderson Rudnick Investment Management LLC – Kayne Anderson Rudnick Investment Management LLC received final approval in the quarter for an investment up to \$350 million in the Liquid Equity allocation. Kayne Anderson Rudnick Investment Management LLC has confirmed that no placement agents were used for this commitment.

Pine Bridge High Yield Fixed Income – PineBridge Investments received final approval in the quarter for an investment up to \$350 million in the Risk Mitigation allocation. PineBridge Investments has confirmed that no placement agents were used for this commitment.

Rock Point Growth and Income Real Estate Fund III, L.P. – Rockpoint Group LLC received final approval in the quarter for an investment up to \$60 million in the Liquid Equity allocation. Rockpoint Group LLC may engage one or more placement agents on a limited basis for engagement solely with a small number of investors outside of the United States. If a placement agent fee is paid in connection with Growth and Income Fund III, the General Partner will be responsible for all such fees and expenses.

Warburg Pincus Global Growth, L.P. – Warburg Pincus LLC received final approval in the quarter for an investment up to \$115 million in the Illiquid Equity allocation. Warburg Pincus LLC does not expect to engage a placement agent in the U.S., although the firm has engaged financial institutions to sponsor or arrange feeder funds that target high net worth individuals to invest in WPGG. In connection with the engagements, the firm may pay customary fees to such financial institutions. Any fees paid to such financial institutions would be borne by Warburg Pincus and/or the respective feeder fund.

Kelso & Company– Kelso Investment Associates X, L.P. received final approval in the quarter for an investment up to \$60 million in the Illiquid Equity allocation. Kelso & Company has confirmed that it did use placement agents for this commitment. It was stated that “Kelso will bear the economic burden of all placement agent fees.”

Acadian Asset Management LLC – Acadian Asset Management LLC received final approval in the quarter for an investment up to \$285 million in the Liquid Equity allocation. Acadian Asset Management has confirmed that no placement agents were used for this commitment.

Placement Agent Disclosure

Patria Private Equity VI, L.P. – Patria Finance Limited received final approval in the quarter for an investment up to \$70 million in the Illiquid Real Assets allocation. Patria Finance Limited has confirmed that no placement agents were used for this commitment.

Jordan Resolute IV, L.P. – The Jordan Company received final approval in the quarter for an investment up to \$70 million in the Illiquid Real Assets allocation. The Jordan Company has confirmed that no placement agents were used for this commitment.

Neuberger Berman Global Put-Write (ATM) strategy – Neuberger Berman Investment Advisers received final approval in the quarter for the Global Volatility Equity RFP an investment up to 2.2% of the total fund in public equity allocation. There was no placement agent was engaged.

UBS Dynamic Put-Writing Strategy – UBS Asset Management received final approval in the quarter as secondary option for the Global Volatility Equity RFP an investment up to 2.2% of the total fund in public equity allocation. There was no placement agent was engaged.

PIMCO Liquid Real Assets Completion Portfolio – Pacific Investment Management Company received final approval in the quarter for Liquid Real Assets Completion Portfolio RFP an investment up to 2% of the total fund of approximately \$300 million in Real Assets allocation. There was no placement agent was engaged.

Nuveen Asset Management – Nuveen Asset Management received final approval in the quarter as a secondary option for Liquid Real Assets Completion Portfolio RFP an investment up to 2% of the total fund of approximately \$300 million in Real Assets allocation. There was no placement agent was engaged.

NGP Natural Resources XII, L.P. – Natural Gas Partners received final approval in the quarter for an investment up to \$70 million in the Illiquid Real Assets allocation. Natural Gas Partners has confirmed that placement fees will be paid by the fund. However, all placement agent fees paid by the fund will be offset.

Altaris Health Partners IV, L.P. – Altaris Health Partners received final approval in the quarter for an investment up to \$75 million in the Private Equity allocation. Altaris Health Partners has confirmed that no placement agent was engaged.

Altaris Constellation Partners IV, L.P. – Altaris Health Partners received final approval in the quarter to commit a 4:1 split to Altaris Health Partners IV, L.P. (“Altaris”) and Altaris Constellation Partners IV, L.P. (“Constellation IV”). Constellation IV is an overflow vehicle designed to accommodate potential transactions larger than \$100 million in the Private Equity allocation. Altaris Constellation Partners has that there was no placement agent used for fundraising

Placement Agent Disclosure

CVC Capital Partners VII, L.P. – CVC Capital Partners received final approval in the quarter for an investment up to €100 million in the Illiquid Real Estate (Core) allocation. CVC Capital Partners has confirmed that CVC Funding, LLC is to conduct activities as a distributor and/or placement agent for private funds managed by or otherwise affiliated with CVC Credit Partners or a CVC Entity. The Distributor does not sit within the same corporate group as the General Partner. No placement agent fees or expenses will be borne by the Fund.

EnCap Energy Capital Fund XI, L.P. – EnCap Investments, L.P. received final approval in the quarter for an investment up to \$100 million in the Private Equity allocation. EnCap Investments, L.P. has confirmed that there was no placement agent used for fundraising

Cerberus Global Residential Mortgage Opportunity Fund, L.P. – Cerberus Capital Management received final approval in the quarter for an investment up to \$100 million in the Illiquid Credit allocation. Cerberus Capital Management has confirmed that there was no placement agent used for fundraising

Eagle Point Credit Partners, L.P. – Eagle Point Credit Partners, L.P. received final approval in the quarter for an investment up to \$100 million in the Illiquid Credit allocation. Eagle Point Credit Partners, L.P. has confirmed that there was no placement agent used for fundraising

Meridiam Infrastructure North America Fund III, LP. – Meridiam Infrastructure Partners received final approval in the quarter for an investment up to \$75 million in the Illiquid Real Assets allocation. Meridiam Infrastructure Partners has confirmed that they have used CL to act as placement agent for the Fund. Meridiam or its affiliates will bear the cost of all placement fees.

Onex Partners V, L.P. – Onex Partners Manager LP received final approval in the quarter for an investment up to \$75 million in the Private Equity allocation. Onex Partners Manager LP Partners has confirmed that Credit Suisse to act as placement agent for the Fund. Meridiam or its affiliates will bear the cost of all placement fees. 100% of any advisory, monitoring, transaction, topping, break-up, or directors' fees and other fees received, including placement agent fees will be offset by management fees.

Cheyne Real Estate Credit Fund V –Opportunistic L.P. – Cheyne Real Estate Credit Fund V –Opportunistic L.P. received final approval in the quarter for an investment up to \$90 million in the Illiquid Real Estate Credit (opportunistic) allocation. Cheyne Capital has communicated that there was no placement agent used for fundraising

Rockpoint Growth and Income Real Estate Fund II– Rockpoint Growth and Income Real Estate Fund II, L.P received final approval in the quarter for an investment up to \$75 million in the Illiquid Real Estate (Growth) allocation. Rockpoint Group, L.L.C. has confirmed that Hodes Weill UK LLP on a limited basis for engagement solely with a small number of investors outside of the United States. If a placement agent fee is paid in connection with Growth and Income Fund II, the General Partner will be responsible for all such fees and expenses.

Placement Agent Disclosure

Rockwood Capital– Rockwood Capital received final approval in the quarter for an investment up to \$150 million in the Illiquid Real Estate (Core) allocation. Rockwood Capital, L.L.C. has communicated that there was no placement agent used for fundraising.

GEM Realty Evergreen Fund, L.P. – GEM Realty Evergreen Fund, L.P. received final approval in the quarter for an investment up to \$100 million in the Illiquid Real Estate (Core) allocation. GEM Realty Capital, Inc. has confirmed that they have not engaged a private placement agent to assist with its current fundraising efforts.

Petershill Private Equity L.P. – Petershill Private Equity LP. Received final approval in the quarter for an investment up to \$150 million in the illiquid private equity allocation. GSAM –Petershill Alternative Investments & Manager Selection (AIMS) has communicated that there was no placement agent used for fundraising.

Antin Infrastructure Partners III, L.P. – Antin Infrastructure Partners III, L.P. received final approval in the quarter for an investment up to 65 million Euros (approx. 72 million USD) in the illiquid infrastructure (Real Assets) allocation. Antin Infrastructure Partners has confirmed that Campbell Lutyens & Co. Ltd are engaged as placement agent. The fee terms are as follows: GP will incur all costs associated with the hiring of said placement agent.

Tennenbaum Capital Partners, Direct Lending Fund of One – Tennenbaum Capital Partners, Direct Lending Fund of One received final approval in the quarter for an investment up to \$200 million in the Illiquid Credit allocation. Tennenbaum Capital Partners has they did not engage a placement agent or third party marketer with respect to the NM PERA commitment.

RCP Small & Emerging Manager Fund of One – RCP Small & Emerging Manager Fund of One received final approval in the quarter for an investment up to \$75 million in the Global Equity allocation. RCP Advisors has confirmed that they did not engage a placement agent or third party marketer with respect to the NM PERA commitment.

Napier Park Global Capital Specialized & Complex Credit – Napier Park Global Capital Specialized & Complex Credit Received final approval in the quarter for an investment up to \$300 million in the Illiquid Credit allocation. Napier Park Global Capital (US) has confirmed that they did not engage a placement agent or third party marketer with respect to the NM PERA commitment.

Placement Agent Disclosure

Ellington Structured Credit – Ellington Structured Credit Received final approval in the quarter for an investment up to \$100 million in the Global Equity allocation. Ellington Management Group, LLC has confirmed that UBS are engaged as placement agent. The fee terms are as follows:

FountainVest China Capital Partners III, L.P. – FountainVest China Capital Partners III, L.P. Received final approval in the quarter for an investment up to \$85 million in the Global Equity allocation. FountainVest Advisors Ltd. has confirmed that UBS are engaged as placement agent. The fee terms are as follows: FountainVest believes that the amount that will be paid to UBS which relates to NM PERA's investment is between 0.3% and 1.75% of NM PERA's commitment. The actual dollar amount of placement fees payable being US\$685,201. As per the LPA, as the entire placement agent fee is not treated as a fund expense but a GP expense, NM PERA will in effect be paying US\$0 to the placement agent.

Harrison Street Real Estate Partners VI, L.P. - Harrison Street Real Estate Partners VI, L.P. received final approval in the quarter for an investment up to \$75 million in the Real Estate allocation. . Harrison Street Real Estate Capital, LLC has confirmed that they did not engage a placement agent or third party marketer with respect to the NM PERA commitment.

Tillridge Global Agribusiness Partners II, L.P. – Tillridge Global Agribusiness Partners II, L.P. received final approval in the quarter for an investment up to \$75 million in the Real Assets allocation. Tillridge is a NGP affiliate, a 35% owner. Tillridge Capital Partners, LLC has confirmed that they did not engage a placement agent or third party marketer with respect to the NM PERA commitment.

Charterhouse Capital Partners X, L.P. – Charterhouse Capital Partners X, L.P. received final approval in the quarter for an investment up to \$45 million in the Illiquid Credit allocation Charterhouse Capital Partners LLP LLC has confirmed that they did not engage a placement agent or third party marketer with respect to the NM PERA commitment.

ACM Fund II, LLC. – ACM Fund II, LLC. Received final approval in the quarter for an investment up to \$40 million in the Real Assets allocation. ACM Management Company, LLC. ACM is working with Equilibrium Capital to fundraise for Fund II. Equilibrium Capital is a founding member of ACM, a significant minority shareholder and a member of the Investment and Management Committees. For the current Fund, ECS will receive 1.5 percent of total committed capital, paid over two years, as compensation for these services. For Fund I, ECS was also paid 1.5 percent of total committed capital, paid over three years, for these services. No placement fees will be paid by the Fund. The GP will pay placement costs out of its management fee. The amount relating to NM PERA commitment of \$40 million is therefore \$600,000.

Placement Agent Disclosure

DRC European Real Estate Debt Fund III, L.P. DRC European Real Estate Debt Fund III, L.P. received final approval in the quarter for an investment up to \$75 million in the Private Credit allocation. DRC Capital Partners has confirmed that Evercore Partners International are engaged as placement agent. The fee terms are as follows: “New” Capital Commitments (new investors & element of re-ups exceeding Fund II commitment level) – 1.5%. “Existing” Capital Commitments (existing investors with re-ups up to Fund II commitment level) – 1.0%

Starwood XI Management, L.P. – Starwood XI Management, L.P. received final approval in the quarter for an investment up to \$75 million in the Real Estate allocation. Starwood Capital has confirmed that they did not engage a placement agent or third party marketer with respect to the NM PERA commitment.

DFJ Venture XII, L.P. – DFJ Venture XII, L.P. received final approval in the quarter for an investment up to \$25 million in the Private Equity allocation. Draper Fisher Jurvetson has confirmed that they did not engage a placement agent or third party marketer with respect to the NM PERA commitment.

Brookfield Infrastructure Fund III, L.P. – Brookfield Infrastructure Fund III, L.P. received final approval in the quarter for an investment up to \$75 million in the Real Assets allocation. Brookfield Asset Management Inc. has confirmed that they did not engage a placement agent or third party marketer with respect to the NM PERA commitment.

TCV IX Fund – TCV IX Fund, L.P. received final approval in the quarter for an investment up to \$65 million in the Private Equity allocation. Technology Crossover Ventures has confirmed that they did not engage a placement agent or third party marketer with respect to the NM PERA commitment.

PineBridge Passport I, L.P. - PineBridge Passport I, L.P. received final approval in the quarter for an investment up to \$150 million in the Private Equity allocation. PineBridge has confirmed that they did not engage a placement agent or third party marketer with respect to the NM PERA commitment.

Quadrant Enhanced Debt Fund, L.P. - Quadrant Enhanced Debt Fund, L.P. received final approval in the quarter for an investment up to \$70 million in the Private Credit allocation. Quadrant has confirmed that they did not engage a placement agent or third party marketer with respect to the NM PERA commitment.

Carlyle Power Partners II, L.P. - Carlyle Power Partners II, L.P. received final approval in the quarter for an investment up to \$65 million in the Private Equity allocation. Carlyle has confirmed that they did not engage a placement agent or third party marketer with respect to the NM PERA commitment.

Placement Agent Disclosure

Warburg Pincus Private Equity XII, L.P. - Warburg Pincus Private Equity XII, L.P. received final approval in the quarter for an investment up to \$85 million in the Private Equity allocation. Warburg Pincus has confirmed that they did not engage a placement agent or third party marketer with respect to the NM PERA commitment.

PW (Perella Weinberg) Real Estate Fund III, L.P. - PW (Perella Weinberg) Real Estate Fund III, L.P. received final approval in the quarter for an investment up to \$70 million in the Real Estate allocation. Perella Weinberg has confirmed that they did not engage a placement agent or third party marketer with respect to the NM PERA commitment.

Madison Realty Capital Debt Fund III, L.P. - Madison Realty Capital Debt Fund III, L.P. received final approval in the quarter for an investment up to \$50 million in the Real Estate allocation. Madison has confirmed that they did not engage a placement agent or third party marketer with respect to the NM PERA commitment.

Century Focused Fund IV, L.P. - Century Focused Fund IV, L.P. received final approval in the quarter for an investment up to \$30 million in the Private Equity allocation. Century Capital Management has confirmed that they did not engage a placement agent or third party marketer with respect to the NM PERA commitment.

Trinity Ventures XII, L.P. - Trinity Ventures XII, L.P. received final approval in the quarter for an investment up to \$30 million in the Private Equity allocation. Trinity Ventures has confirmed that they did not engage a placement agent or third party marketer with respect to the NM PERA commitment.

RRJ Capital Master Fund III, L.P. - RRJ Capital Master Fund III, L.P. received final approval in the quarter for an investment up to \$75 million in the Private Equity allocation. RRJ Capital III Ltd. has confirmed that they did not engage a placement agent or third party marketer with respect to the NM PERA commitment.

Rockwood X, L.P. - Rockwood X, L.P. received final approval in the quarter for an investment up to \$60 million in the Real Estate allocation. Rockwood Capital has confirmed that they did not engage a placement agent or third party marketer with respect to the NM PERA commitment.

Ardian Infrastructure IV, L.P. - Ardian Infrastructure IV, L.P. received final approval in the quarter for an investment up to \$65 million in the Real Assets allocation. Ardian has confirmed that they did not engage a placement agent or third party marketer with respect to the NM PERA commitment.

Placement Agent Disclosure

Atalaya Special Opportunities Fund VI, L.P. – Atalaya Special Opportunities Fund VI, L.P. received final approval in the quarter for an investment up to \$50 million in the Private Equity-Credit allocation. Atalaya Capital Management has confirmed that they did not engage a placement agent or third party marketer with respect to the NM PERA commitment.

Charterhouse Capital Partners X, L.P. – Charterhouse Capital Partners X, L.P. received final approval in the quarter for an investment up to \$70 million in the Private Equity allocation. Charterhouse Capital Partners LLP has confirmed that they did not engage a placement agent or third party marketer with respect to the NM PERA commitment.

57 Stars – 57 Stars received final approval in the quarter for an investment up to \$150 million in the Private Equity allocation. 57 Stars, LLC has confirmed that they did not engage a placement agent or third party marketer with respect to the NM PERA commitment.

Athyrium Opportunities Fund II, L.P. – Athyrium Opportunities Fund II, L.P. received final approval in the quarter for an investment up to \$65 million in the Private Equity allocation. Neuberger Berman Alternatives Advisers LLC and its affiliates (“Neuberger Berman”) provide sub-advisory services and other ancillary services to Athyrium Capital Management LLC, including assistance with fundraising and marketing of the Fund. For investors introduced by Neuberger Berman, Neuberger Berman typically receives approximately 60% of one year’s management fee, paid out over a three year period. Such fees are not paid by the fund, rather out of the management fee collected by Athyrium Capital Management, LLC. Neuberger Berman, LLC. is a FINRA regulated broker dealer.

KSL Capital Partners IV, L.P. - KSL Capital Partners IV, L.P. received final approval in the quarter for an investment up to \$60 million in the Real Estate allocation. KSL Capital Partners, LLC has confirmed that they did not engage a placement agent or third party marketer with respect to the NM PERA commitment.

Garrison Opportunity Fund IV-A, LLC. - Garrison Opportunity Fund IV-A, LLC received final approval in the quarter for an investment up to \$60 million in the Private Equity allocation. Garrison Investment Group confirmed that they did not engage a placement agent or third party marketer with respect to the NM PERA commitment.

Harrison Street Real Estate Partners V, L.P. – Harrison Street Real Estate Partners V, L.P. received final approval in the quarter for an investment up to \$45 million in the Real Estate allocation. Harrison Street confirmed that they did not engage a placement agent or third party marketer with respect to the NM PERA commitment.

Placement Agent Disclosure

Paine & Partners Capital Fund IV, L.P. - Paine & Partners Capital Fund IV, L.P. received final approval in the quarter for an investment up to \$50 million in the Real Assets allocation. Paine & Partners confirmed that they did not engage a placement agent or third party marketer with respect to the NM PERA commitment.

Kelso Investments Associates IX - Kelso Investments Associates IX received final approval in the quarter for investment up to \$60 million in the Private Equity allocation. Kelso disclosed that TransPacific Group LLC and TransPacific Group (Asia) Ltd will act as a placement agent in relation to the targeted marketing of limited partner interests in KIA IX to certain specified prospective investors in East Asia and Hong Kong & China respectively. Kelso was introduced to Mark Mason, the founder of the TransPacific companies, by a former executive of a limited partner. KTB Investment & Securities Co., Ltd. is the sub-agent in Korea. The placement agent fee is 100% offset to management fees.

KKR Global Infrastructure Fund II - KKR Global Infrastructure Fund received final approval in the quarter for investment up to \$50 million in the Real Assets allocation. KKR confirmed that they did not engage a placement agent or third party marketer with respect to the NM PERA commitment.

Natural Gas Partners XI - Natural Gas Partners XI received final approval in the quarter for investment up to \$50 million in the Real Assets allocation. NGP confirmed that they did not engage a placement agent or third party marketer with respect to the NM PERA commitment.

Starwood Global Opportunity X - Starwood Global Opportunity X received final approval in the quarter for investment up to \$60 million in the Real Estate allocation. Starwood confirmed that they did not engage a placement agent or third party marketer with respect to the NM PERA commitment.

Encap Flatrock Midstream Energy III - Encap Flatrock III received final approval in the quarter for investment up to \$45 million in the Real Asset allocation. Encap disclosed that no placement agent or third-party marketer was used.

Harvest MLP – Harvest received final approval in the quarter for investment up to \$140 million in the Real Assets allocation. Harvest disclosed that no placement agent or third-party marketer was used.

DRC European Real Estate Debt Fund II – PERA committed £26 million to DRC a 2013 vintage year fund in the Real Estate allocation. DRC engaged EverCore Private Funds Group for the marketing of ERED II in North America. The GP pays up to 2% on amounts raised by Evercore payable in installments over 3 years, or up to 520,000 on PERA's £26 million commitment. The GP pays the placement fee.

Onex Partners IV, LP – PERA committed \$45 million to Onex IV a 2013 vintage year fund in the US buyout allocation. Onex engage Credit Suisse for the marketing of Fund IV. Onex pays a flat fee. The GP pays the placement fee.

Placement Agent Disclosure

Blackstone Real Estate Partners VII – PERA committed \$35 million to Blackstone VII a 2012 vintage year fund in the Real Estate allocation. Blackstone engaged Park Hill Group LLC for the marketing of BREP VII. Although Blackstone engaged Park Hill in connection for certain clients, Park Hill was not used in connection with PERA’s commitment, thus PERA did not pay any placement fees.

Gilde Buyout Fund IV – PERA committed €15 million Euro to Gilde IV a 2011 vintage year fund in the non-US buyout allocation. Gilde engaged MVision for the marketing of Fund IV. Gilde pays a 0.35% fee on aggregate commitments, or €52,500 on PERA’s €15 million commitment. The GP pays the placement fee.

Selene Residential Mortgage Opportunity Fund II – PERA committed \$20 million to Selene II a 2011 vintage year fund in the Real Estate allocation. Selene engaged Capstone Partners for the marketing of Fund II. Selene pays a 1% fee, or \$200,000 on PERA’s \$20 million commitment. The fee is offset by the management fee.

Blackstone Real Estate Partners Europe III – PERA committed \$25 million to BREP Europe III a 2008 vintage year fund in the Real Estate allocation. Blackstone engaged Park Hill Group LLC for the marketing of BREP Europe III. BREP’s agreement is to pay Park Hill 1% on aggregate commitments, or \$250,000 on PERA’s \$25 million commitment.

Onex Partners III – PERA committed \$25 million to Onex III a 2008 vintage year fund in the Private Equity buyout allocation. Onex engaged Credit Suisse for the marketing of Fund III. The approximate fee paid on PERA’s \$25 million commitment was \$325,000.

Selene Residential Mortgage Opportunity Fund I – PERA committed \$30 million to Selene I a 2008 vintage year fund in the Real Estate allocation. Selene engaged Capstone Partners for the marketing of Fund II. Selene pays a 1% fee, or \$300,000 on PERA’s \$30 million commitment. The fee is offset by the management fee.

Jordan Resolute Fund II – PERA committed \$25 million to Jordan Resolute II a 2007 vintage year fund in the Private Equity buyout allocation. Jordan engaged Credit Suisse for the marketing of Fund II. Jordan pays Credit Suisse 0.5%, or \$113,354 on PERA’s \$25 million commitment.

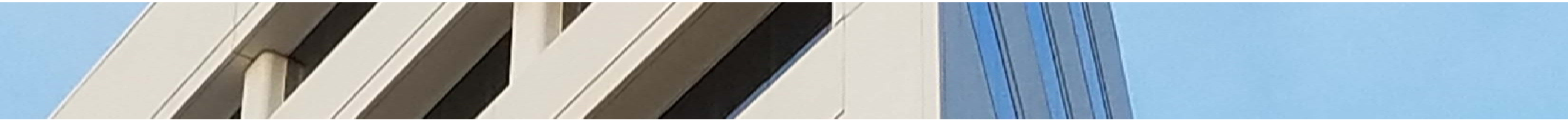
Kelso Investment Associates VIII – PERA committed \$30 million to Kelso III a 2007 vintage year fund in the Private Equity buyout allocation. Kelso engaged Credit Suisse for the marketing of Fund VIII. Kelso pays Credit Suisse 0.143%, or \$43,045 on PERA’s \$30 million commitment.

Wayzata Opportunities Fund II – PERA committed \$30 million to Wayzata II a 2007 vintage year fund in the distressed private equity allocation. Wayzata engaged Park Hill Group LLC for the marketing of Fund II. Wayzata pays a fee of 0.35% on aggregate commitments, or \$105,000 on PERA’s \$30 million commitment.

Placement Agent Disclosure

Cerberus Institutional Partners – Series IV – PERA committed \$25 million to Cerberus IV a 2006 vintage year fund in the distressed Private Equity allocation. Cerberus engaged Monument Group for the marketing of Fund IV.

Coller International Partners V – PERA committed \$25 million to Coller V a 2006 vintage year fund in the non-US Private Equity allocation. Coller engaged Credit Suisse for the marketing of Fund V.



Additional Information

Wilshire Consulting Benchmarks



	Policy Index 1/1 - 4/30/19	Policy Index 5/1 - 5/31/19	Policy Index 6/1 - 6/30/19	Policy Index 7/1 - 7/31/19	Policy Index 8/1 - 8/31/19
Global Equity	43.50%	42.85%	42.33%	41.81%	41.29%
MSCI ACWI IMI (\$net)	36.50%	35.85%	35.33%	34.81%	34.29%
MSCI ACWI Min Vol (\$net)	7.00%	7.00%	7.00%	7.00%	7.00%
Credit	15.00%	15.00%	15.00%	15.00%	15.00%
Barclays Global HY (Hedged)	12.00%	12.00%	12.00%	12.00%	12.00%
50% JPM EMBI(\$)/ 50% JMP GBI (\$)	3.00%	3.00%	3.00%	3.00%	3.00%
Risk Mitigation	21.50%	21.50%	21.37%	21.24%	21.11%
Barclays U.S. Agg	19.00%	19.00%	18.87%	18.74%	18.61%
Barclays Global Agg (Hedged)	2.50%	2.50%	2.50%	2.50%	2.50%
Real Assets	20.00%	20.00%	20.00%	20.00%	20.00%
Wilshire Global REIT	7.00%	7.00%	7.00%	7.00%	7.00%
Alerian MLP Index	2.00%	2.00%	2.00%	2.00%	2.00%
DJB Global Infra Index	3.00%	3.00%	3.00%	3.00%	3.00%
Barclays U.S. TIPS	3.00%	3.00%	3.00%	3.00%	3.00%
Bloomberg Commodity Index (TR)	5.00%	5.00%	5.00%	5.00%	5.00%
Multi Risk	0.00%	0.65%	1.30%	1.95%	2.60%
Wilshire Risk Parity - 15%	0.00%	0.65%	1.30%	1.95%	2.60%
	100.00%	100.00%	100.00%	100.00%	100.00%
5/1/2019 Funding	\$100 million	0.65%			
100% MSCI ACWI IMI (\$net)		0.65%			
6/1/2019 Funding	\$100 million		0.65%		
80% MSCI ACWI IMI (\$net)			0.52%		
20% Barclays U.S. Agg			0.13%		
7/1/2019 Funding	\$100 million			0.65%	
80% MSCI ACWI IMI (\$net)				0.52%	
20% Barclays U.S. Agg				0.13%	
8/1/2019 Funding	\$100 million				0.65%
80% MSCI ACWI IMI (\$net)					0.52%
20% Barclays U.S. Agg					0.13%

Wilshire Consulting

Footnotes



Since Inception Dates

COMPOSITES

- **NM PERA Total Fund** 6/30/1985
- **Global Equity** 3/31/2013
- **Risk Reduction & Mitig** 3/31/2013
- **Credit Oriented Fixed Inc** 3/31/2013
- **Real Assets** 3/31/2013
- **Multi-Risk** 4/30/2019

GLOBAL EQUITY

- **Global Public Stock** 5/31/1998
- **Global Low Vol** 10/31/2016
- **BlackRock MSCI ACWI LV** 10/31/2016
- **SSgA ACWI IMI Index** 9/30/2016
- **Portable Alpha** 9/30/2006
- **Active U.S. Equity** 9/30/2004
- **AQR Alphaport** 7/31/2015
- **Kayne Anderson SC** 8/31/2018
- **TimesSquare SMID Grow** 3/31/2005
- **NT MSCI ACWI xUS** 12/31/2010
- **Active Non-US Equity** 11/30/2007
- **Acadian Int'l Equity** 4/30/2018
- **MFS International Value** 3/31/2010
- **Principal Int'l Small Cap** 12/31/2007
- **Schroder Int'l Small Cap** 6/30/2012
- **Active Emerging Markets** 6/30/2006
- **Axiom EME** 12/31/2018
- **Hedged Equity** 6/30/2015
- **Private Equity** 6/30/2015

RISK REDUCTION & MITIGATION

- **Domestic Core Fixed Inc** 6/30/1995
- **BlackRock Core Active** 6/30/1995

- **MacKay Shields Core IG** 6/30/2012
- **Prudential Core Cons** 6/30/2012
- **Global Core Fixed Income** 6/30/2011
- **Manulife Core Global Agg** 3/31/2011
- **BlackRock Global Fixed Inc** 4/30/2019
- **Cash** 3/31/1989

CREDIT ORIENTED FIXED INCOME

- **Liquid Credit** 6/30/2015
- **PineBridge Global HY** 9/30/2018
- **CVC Global Credit Opp** 10/31/2015
- **Ellington HF** 12/31/2016
- **HIG Bayside Loan Opp II** 6/30/2010
- **Emerging Markets Debt** 7/31/2015
- **Lazard EMD** 7/31/2015
- **Illiquid Credit** 6/30/2015
- **Napier Park** 11/30/2016
- **Credit Oriented HF** 1/31/2007

REAL ASSETS

- **Liquid Real Estate** 11/30/2008
- **Security Capital REIT** 4/30/2017
- **DFA Global REIT** 4/30/2017
- **Illiquid Real Estate** 6/30/2015
- **Liquid Real Assets** 8/31/2009
- **Deutsche Infrastructure** 8/31/2016
- **Harvest MLP** 5/31/2014
- **PIMCO TIPS** 10/31/2017
- **PIMCO Commodities** 12/31/2017
- **Illiquid Real Assets** 6/30/2015
- **Market Neutral HF** 6/30/2015

Performance Related Comments

Performance shown is gross of fees unless otherwise noted. Fiscal year ends on June 30th. Performance is preliminary and subject to change.

"Inception Date" refers to the first full month following initial funding. "Inception Date" for Alternatives is as of the first funding of the asset class.

Indices show N/A for since inception returns when the fund contains more history than the corresponding index.

The Cash Equivalent Composite return includes tax reclaims on two bond issues which were received by the Corporate Action Clearing Account. This accounts for the additional return over the JP Morgan STIF account in the longer-term periods.

Updated returns for the NCREIF Property Index are currently unavailable for use in calculating the Long-Term Target Allocation Index and the Real Estate Custom Index. As such, a 0.00% return is assumed for the NCREIF Property Index. Therefore, returns for these custom indices are preliminary and subject to change.

Custom Index Comments

Long-Term Target Allocation Index consists of:

- 40% S&P 500 Index (Cap Wtd), 60% LB Aggregate Bond Index until 08/31/1992
- 55% S&P 500 Index (Cap Wtd), 45% LB Aggregate Bond Index until 08/31/1995
- 52.5% S&P 500 Index (Cap Wtd), 2.5% MSCI EAFE Blend, 45% LB Aggregate Bond Index until 11/30/1995
- 50% S&P 500 Index (Cap Wtd), 5% MSCI EAFE Blend, 45% LB Aggregate Bond Index until 02/29/1996
- 45% S&P 500 Index (Cap Wtd), 10% MSCI EAFE Blend, 45% LB Aggregate Bond Index until 11/30/1997
- 45% S&P 500 Index (Cap Wtd), 15% MSCI EAFE Blend, 40% LB Aggregate Bond Index until 02/28/1999
- 42% Russell 3000 Index, 18% MSCI EAFE Blend, 40% LB Aggregate Bond Index until 05/31/1999
- 45% Russell 3000 Index, 15% MSCI EAFE Index (Gross), 40% LB Aggregate Bond Index until 06/30/2000
- 42% Russell 3000 Index, 18% MSCI EAFE Index (Gross), 40% LB Aggregate Bond Index until 06/30/2005
- 40% Russell 3000 Index, 25% MSCI EAFE Index (Gross), 35% LB Aggregate Bond Index until 06/30/2007
- 35% Russell 3000 Index, 25% MSCI ACW Ex US Blended Index (Gross), 25% LB Aggregate Bond Index, 5% 3 Mo LIBOR Index + 4%, 5% Venture Economics All Private Equity Index (lagged one quarter), 2.5% NCREIF Property Index, and 2.5% CPI + 5% until 10/31/2009
- 35% Russell 3000 Index, 25% MSCI ACW Ex US Blended Index (Gross), 25% Barclays Global Agg Blended Index, 5% 3 Mo LIBOR Index + 4%, 5% Venture Economics All Private Equity Index (lagged one quarter), 2.5% NCREIF Property Index, 1% Barclays US TIPS Index, 1% S&P GSCI Light Energy Index, and 0.5% CPI + 5% until 06/30/2010
- 27% Russell 3000 Index, 27% MSCI ACW Ex US Blended Index (Gross), 26% Barclays Global Agg Blended Index, 9% HFRI Fund of Funds Composite Index, 5% Private Equity Custom Index, 3% Real Estate Custom Index, and 3% Real Assets Custom Index until 11/30/2012
- 29% Russell 3000 Index, 20% Int'l Equity Custom Index, 26% Fixed Income Custom Index, 5% Liquid Alpha Index, 7% HFRI Fund of Funds Composite Index, 5% Private Equity Custom Index, 3% Real Estate Custom Index, and 5% Real Assets Custom Index until 12/31/2012.
- 21.1% Russell 3000 Index, 24.8% Int'l Equity Custom Index, 26.1% Core and Global Fixed Income Custom Index, 5% Fixed Income Plus Sectors Custom Index, 4% HFRI Fund of Funds Composite Index, 7% Private Equity Custom Index, 5% Real Estate Custom Index, and 7% Real Assets Custom Index until 04/30/2016.
- 43.5% Global Equity, 21.5% Risk Reduction & Mitigation, 20% Real Assets, 15% Credit Oriented Fixed Income thereafter.

	Policy Index 1/1 - 4/30/19	Policy Index 5/1 - 5/31/19	Policy Index 6/1 - 6/30/19	Policy Index 7/1 - 7/31/19
Global Equity	43.50%	42.85%	42.33%	41.81%
MSCI ACWI IMI (\$net)	36.50%	35.85%	35.33%	34.81%
MSCI ACWI Min Vol (\$net)	7.00%	7.00%	7.00%	7.00%
Credit	15.00%	15.00%	15.00%	15.00%
Barclays Global HY (Hedged)	12.00%	12.00%	12.00%	12.00%
50% JPM EMH(\$I) / 50% JPM GBI (\$)	3.00%	3.00%	3.00%	3.00%
Risk Mitigation	21.50%	21.50%	21.37%	21.24%
Barclays U.S. Agg	19.00%	19.00%	18.87%	18.74%
Barclays Global Agg (Hedged)	2.50%	2.50%	2.50%	2.50%
Real Assets	20.00%	20.00%	20.00%	20.00%
Wilshire Global REIT	7.00%	7.00%	7.00%	7.00%
Alerian MLP Index	2.00%	2.00%	2.00%	2.00%
DIG Global Infra Index	3.00%	3.00%	3.00%	3.00%
Barclays U.S. TIPS	3.00%	3.00%	3.00%	3.00%
Bloomberg Commodity Index (TR)	5.00%	5.00%	5.00%	5.00%
Multi Risk	0.00%	0.65%	1.30%	1.95%
Wilshire Risk Parity - 15%	0.00%	0.65%	1.30%	1.95%
	100.00%	100.00%	100.00%	100.00%

5/1/2019 Funding	\$100 million	0.65%
100% MSCI ACWI IMI (\$net)		0.65%
6/1/2019 Funding	\$100 million	0.65%
80% MSCI ACWI IMI (\$net)		0.52%
20% Barclays U.S. Agg		0.13%
7/1/2019 Funding	\$100 million	0.65%
80% MSCI ACWI IMI (\$net)		0.52%
20% Barclays U.S. Agg		0.13%

Wilshire Consulting

Footnotes



Manager Transition Comments

During April 2019 Parametric Credit Cash Overlay, Aermont Cap RE Fund IV, Real Assets Cash Overlay, BlackRock Global FI and Zia Risk Parity were funded.

During March 2019 Warburg Pincus PE GG and Harrison Street Real Estate Partners VII were funded. Mason Capital LP was defunded.

During February 2019 TCV X and Kelso X were funded.

During December 2018 Axiom EM, Patria PE Fund VI and Ardian V were funded. Aberdeen EM was defunded.

During November 2018 Onex V was funded.

During October 2018 GoldenTree Offshore was defunded. GEM RLTY EVERGREEN was funded.

During September 2018 PineBridge High Yield, Resolute Fund VI, and Kayne Anderson SCC were funded. Guggenheim Global High Yield and DFA US Target Value were defunded.

During August 2018 CVC VII was funded.

During July 2018 NEW ROCK CORE FUND was funded. BPG Investment Partnership VIII was defunded.

During June 2018 Altaris Con Partners IV and Altaris Health Partners IV were funded.

During May 2018 BEP Legacy A was funded and EnerVest Energy XII was defunded.

During April 2018 Acadian International Equity and Helm & Frid Spock 1 were funded. RBC, KBI and Brevan Howard LP were defunded.

During March 2018 Samlyn Onshore Fund was defunded.

During February 2018 Highline Capital Partners and KRG Capital Fund IV were defunded.

During December 2017 PIMCO Commodities was funded. Selene I, Taconic Opportunity Fund and Pradium Fund VII were defunded.

During November 2017 PIMCO TIPS and NGP XII were funded.

During October 2017 Eagle Point and Cerberus Global RPL were funded.

During September 2017 Sarofim and MINA III were funded.

During August 2017 Cheyne V, Rockpoint Fund II and Starwood Global Opportunity Fund XI were funded; Fountainvest Fund II, Tillridge and Capula were defunded.

During July 2017 Petershill and EnCap XI were funded; Davidson Kempner, Graham Global and LIM Asia Multi-Strategy were defunded.

During June 2017 BlackRock Real Estate Transition was defunded.

During May 2017 JCAM Global Fund, Pershing Square L.P. and Lynx (Bermuda) Ltd. were defunded.

During April 2017 DFA REIT, Security Capital REIT and BlackRock REIT Transition were funded. BlackRock REIT, LaSalle REIT, Morgan Stanley REIT and SSGA Russell 1000 were defunded.

During March 2017 Tennenbaum and RCP Fund of One were funded.

During February 2017 FountainVest Fund II was funded.

During January 2017 Tillridge and Antin III were funded.

During December 2016 Harrison Street VI, Ellington HF, Charterhouse Capital Partners X and TCV IX LP were funded.

During November 2016 Napier Park L.P. was funded.

During October 2016 BlackRock MSCI ACWI Minimum Volatility and Perella Weinberg III Fund were funded. Pelican Value Equity was defunded.

During September 2016 SSGA ACWI IMI Index Fund, European Real Estate Debt III, and Rockwood Capital Real Estate Partners X were funded.

During August 2016 ACM II & Deutsche Listed Infrastructure were funded.

Wilshire Consulting

Footnotes



During July 2016 DFJ Fund XII, L.P. was funded.

During June 2016 Pine Bridge Passport I was funded.

During May 2016 Brookfield Infrastructure Fund III was funded.

During March 2016 KSL Capital Partners Fund IV was funded.

During February 2016 Century Focused Fund IV was funded.

During January 2016 Carlyle Power Partners IO was funded.

During December 2015 RRJ Capital Master Fund III L.P. and Warburg Pincus PE XII were funded.

During November 2015 Madison RE Debt Fund III was funded.

During October 2015 CVC Global Credit Opportunities and Guggenheim Global High Yield were funded.

During September 2015 Atalaya SOF VI and Kelso Investment Advisors IX were funded.

During July 2015 Lazard Emerging Market Debt, Ardian Infrastructure IV, AQR Alphaport was funded.

During June 2015 Athyrium Opportunities Fund II, L.P. was funded.

During May 2015 IFM Global Infrastructure Fund, L.P. was funded.

During March 2015 Harrison Street Real Estate Partners V was funded.

During January 2015 Paine & Partners was funded.

During January 2015 Kleinwort Benson Dividend Plus strategy changed its product name to "Kleinwort Benson EAFE Developed Equity" strategy.

During December 2014 Garrison Opportunity Fund IV A LLC and KKR Global Infrastructure Investors II L.P. was funded.

During November 2014 Onex Partners IV L.P. and NGP Natural Resources XI, L.P. was funded.

During September 2014 GTCR Fund XI L.P. was funded.

During August 2014 The Resolute Fund III L.P., Wheelock Street Real Estate Fund II LLC, Parametric Clifton were funded.

During July 2014 EnCap Flatrock Midstream Fund III L.P. was funded.

During June 2014 Harvest MLP – Alpha was funded.

During February 2014 TPG Opp Fund III was funded.

During January 2014 Lime Rock III was funded.

During December 2013 Denham Coinvestment IX was funded.

During November 2013 Brookfield Infrastructure II and Carlyle Partners VI was funded.

During February 2013, Wayzata Opportunities III and IVP XIV were funded.

During January 2013, EnCap Energy Capital Fund IX was funded. During December 2012, Linsalata Capital Partners VI and Rockwood Capital RE IX were funded. During November 2012, Lime Rock Partners VI was funded.

During September 2012, State Street International Alpha Select was liquidated. The account was fully liquidated in December 2012, but received tax reclaims in the amount of 1,232 in January 2013. Blackstone RE Partners VII, Highline Capital Partners, LP, and Saba Capital Partners, LP were funded along with the Market Neutral Composite.

During August 2012, Graham Global Investment Fund was funded.

Wilshire Consulting

Footnotes



During June 2012, MacKay Shields Core Investment Grade and New Enterprise Associates LP XIV were funded.

During May 2012, Prudential Core Plus was funded with proceeds from the liquidation of Western Asset Management US Core Full, which was fully liquidated in November 2012. Riverstone Global Energy & Power Fund V, LP was also funded.

During April 2012, Schroder International Small Companies and Denham Commodity Partners Fund VI were funded

During January 2012, NGP X, LP was funded.

During November 2011, OCM European Principal Opp Fund III, LP was funded.

During September 2011, Carlyle Realty Partners VI (CF) was funded

During August 2011, JP Morgan US Small Cap Growth and Hellman & Friedman Cap Ptnr VIII were funded.

During July 2011, GTCR Fund X was funded

During April 2011, Manulife Strategic Fixed Income and F. Templeton Global Multi-Sector Plus were funded.

During March 2011, PIMCO Total Return Full Authority was funded and F. Templeton Opp Core Plus (Fiduciary Trust) was liquidated.

During December 2010, Northern Trust EAFE Index and State Street Emerging Markets Index were liquidated and Northern Trust ACW Ex US Index was funded. Additionally, assets were transitioned through Credit Suisse ACWI Ex US Transition Account. This account was subsequently used to manage the liquidation of Artio International II, which took place in April 2011. Artio International Equity II was fully liquidated in February 2012, but it received tax reclaims in the amount of 1,697 in January 2013. During September 2010, BlackRock EAFE Transition Account was incepted to manage the transition from Domestic Equity to EAFE. This account was subsequently used to manage the liquidation of Loomis Sayles High Yield Conservative, which took place in March 2011. Accordingly, the transition account has been reclassified as fixed income and renamed to BlackRock Manulife Transition Account. During June 2012, the transition account was used to manage the funding of MacKay Shields Core Investment Grade. During September 2012, the transition account was used to manage the liquidation of State Street International Alpha Select and has since been reclassified as international equity and renamed to BlackRock Transition Account. During October 2013, Wellington Emerging Markets was terminated and the assets were moved to the BlackRock Transition Account and then Aberdeen Emerging Markets. During March 2014, CS McKee and Russell 1000 Growth was defunded and the assets were moved to the BlackRock Transition Account. There is currently \$0 in the transition account.

Glossary

Term	Definition
Absolute Return	An investment in a fund with a goal of consistent positive returns, one sub-category is referred to as “market neutral”
Actual Allocation	The actual current percentage weightings of a portfolio
Alpha	A measure of performance on risk-adjusted basis. Alpha takes the volatility of a fund and compares its risk-adjusted performance to a benchmark index. The excess return of the fund relative to the return of the benchmark index is a fund’s alpha.
Arithmetic Excess	Excess return calculated by simply subtracting manager’s return from index return for same period
Asset Allocation Effect (Group Weight)	Variance attributable to asset allocation decisions, deviations from target policy.
Beta	Volatility of portfolio versus market. Beta = 1: portfolio will move with the market. Beta < 1: portfolio will be less volatile than market.
Duration	Duration is a measure of the price volatility of fixed income securities. The greater the duration of the product, the greater its percentage value volatility. Options include: 1) short/cash duration focus of 0-3 years; 2) intermediate duration focus of 3-5 years; 3) core/market duration focus of 5-7 years; 4) long duration focus of 7+ years.
Geometric Excess	Excess return calculated using the following formula: $(1 + \text{Manager}) / (1 + \text{Index}) - 1$
Holdings-based Attribution	US Equity, Non-US Equity, and Fixed Income tables are holdings-based. The table details various attribution subcategories which impacted each manager’s performance such as: selection, weighting, duration, yield, quality, etc.
Information Ratio	A ratio of portfolio returns above the returns of a benchmark (usually an index) to the volatility of those returns. The information ratio (IR) measures a portfolio manager’s ability to generate excess returns relative to a benchmark, but also attempts to identify the consistency of the investor. In other words, a measure of risk-adjusted return of actively managed portfolio. This ratio will identify if a manager has beaten the benchmark by a lot in a few months or a little every month. The higher the IR, the more consistent a manager is and consistency is an ideal trait. Defined as amount of excess return per unit of excess risk taken, as in $IR = \text{excess return (“alpha”) / tracking error (excess risk)}$.
Interaction Effect (Selection)	Part of return variance that cannot be attributed solely to Asset Allocation Effect or Manager Performance. Mathematically, Interaction is the product of each group’s active weight (i.e., over/underweight) and active return (i.e., out/underperformance). For example, a group with an overweight that outperformed its benchmark would contribute positively to Interaction.
Internal Rate of Return (IRR)	The discount rate often used in capital budgeting that makes the net present value of all cash flows from a particular project equal to zero. A preferred method of calculating Private Equity performance
R-squared	A statistical measure that describes how much of the fund’s movements are explained by movements in an index. Its value ranges from 0 to 1.00. An R-squared of 1.00 means that all movements of a fund are completely explained by movements in the index. A fund with a low R-squared does not act much like the index.

Glossary, continued

Term	Definition
Semi-Variance	Measure of variability (or dispersion) of all returns that fall <u>below</u> mean. Measures only downside risk, or negative asset class or alpha returns. Estimates average loss that portfolio could incur.
Sharpe Ratio	A risk-adjusted measure calculated by using standard deviation and excess return to determine reward per unit of risk. The higher the Sharpe Ratio, the better the fund's historical risk-adjusted performance. For example, the one-year Sharpe Ratio, defined as the one-year return of the product minus the risk-free rate (90 day T-Bill), divided by the standard deviation of the product returns.
Standard Deviation	A measure of variability (or dispersion) of returns around mean return. A low standard deviation (e.g., 5%) indicates returns tend to be very close to mean return, whereas high standard deviation (e.g., 20%) indicates returns can be far from mean return. A manager with a one-year return of 5% and a standard deviation of 5 indicates the range of returns for this manager will likely fall between 0% and 10% during most annual time periods.
Time Weighted Return	The actual rate of return or earnings for the particular period, adjusted for cash flow additions or deletions
Total Alpha	Total Variance: sum of Asset Allocation, Interaction, Manager Performance, and Trading.
Total Return	The return of a particular portfolio that includes both increases or decreases in asset values as well as dividends received
Tracking Error	Standard deviation of excess return. Measure of closely portfolio follows index to which it is benchmarked. Traditional actively managed portfolio has higher tracking error (i.e., >4%). Passively managed portfolio has tracking error close to zero. / A measure of the difference between returns of the portfolio and that of the benchmark it was attempting to imitate; reported as a "standard deviation percentage" difference.
Trading Effect	Difference between buy/hold and total return.
TUCS (Trust Universe Comparison Service)	A collaborative effort between Wilshire Associates and custodial organizations. Custodians submit asset positions and performance data to be pooled into universes of managed tax-exempt portfolios. TUCS is a widely accepted benchmark for the performance of institutional assets.
Variance	Refers to the amount of movement in prices of a particular portfolio; a portfolio that moves a lot has a higher variance

IMPORTANT INFORMATION

This material contains confidential and proprietary information of Wilshire Associates Incorporated (Wilshire), and is intended for the exclusive use of the person to whom it is provided. It may not be disclosed, reproduced or redistributed, in whole or in part, to any other person or entity without prior written permission from Wilshire. Third party information contained herein has been obtained from sources believed to be reliable. Wilshire gives no representations or warranties as to the accuracy of such information, and accepts no responsibility or liability (including for indirect, consequential or incidental damages) for any error, omission or inaccuracy in such information and for results obtained from its use. Information and opinions are as of the date indicated, and are subject to change without notice.

This material is intended for informational purposes only and should not be construed as legal, accounting, tax, investment, or other professional advice.

This report may include estimates, projections and other "forward-looking statements." Due to numerous factors, actual events may differ substantially from those presented.

Wilshire® is a registered service mark of Wilshire Associates Incorporated, Santa Monica, California. All other trade names, trademarks, and/or service marks are the property of their respective holders.

Copyright © 2019 Wilshire Associates Incorporated. All rights reserved.